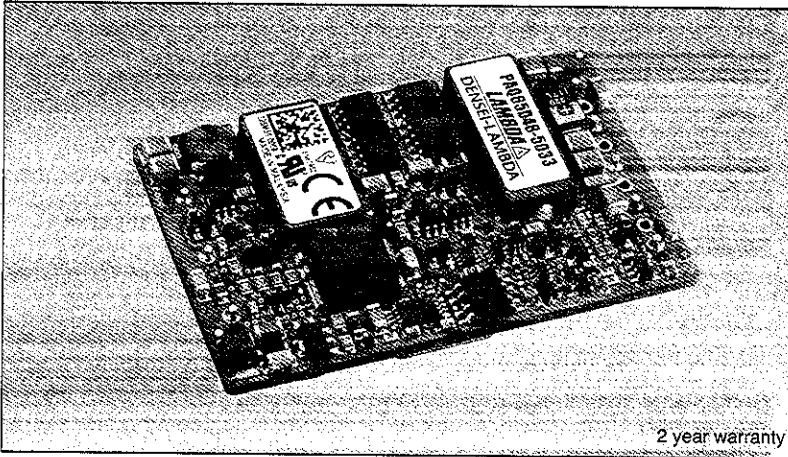


PAQ65D-SERIES

Dual output DC-DC power module for TELECOM

LAMBDA
DENISEI-LAMBDA



2 year warranty

Model name
PAQ 65D 48-5033/

Series Name Output Wattage Rated input voltage Rated output voltage Option
Function D: Dual output
blank: 2 trim type, protection functions (OVP, OCP) manual reset
V : Protection functions (OVP, OCP) auto-recovery
P : Positive logic ON/OFF control
C : 1 trim type

Features

- Proprietary circuit technology achieved dual output with high 90 percent efficiency (5V/3.3V types)
- Low-profile type: 8.9mm high (terminal length excluded)
- Output voltage variable type: separate outputs can be discretely varied. (2 trim type)
- No need for heat sinks: Convection cooling/forced air cooling operation
- Wide range of operating temperature: -40°C to +85°C
- 2 year warranty

Specifications 2 trim type is adjustable with independent trims. 1 trim type is adjustable by single control.
For the details, please see DENISEI-LAMBDA web site.

1. Input voltage range	48VDC (36 ~ 76VDC)
2. Output voltage adj range	-10 ~ +10%
3. Efficiency (Typ.)	PAQ65D48-2518: 86%, PAQ65D48-3318: 86%, PAQ65D48-3325: 87%, PAQ65D48-5033: 90%
4. Cooling Method	Convection cooled / Forced air cooled
5. Operating ambient temperature	-40 ~ +85 deg. C (output derating to be caused depending on the temperature condition)
6. Withstand voltage	Input-output isolation type: 1.5kVDC, 1 min., between input and output
7. Functions	On/Off control, overcurrent protection, overvoltage protection, overtemperature protection
8. Options	/V: Overvoltage protection auto-recovery, overcurrent protection, overtemperature protection
9. Safety standard	Approved by UL60950, CSA60950, and EN60950
10. Dimensions (W × H × D)	36.8mm × 8.9mm × 57.9mm (terminal length excluded) (C type : 36.8mm × 10.2mm × 57.9mm)

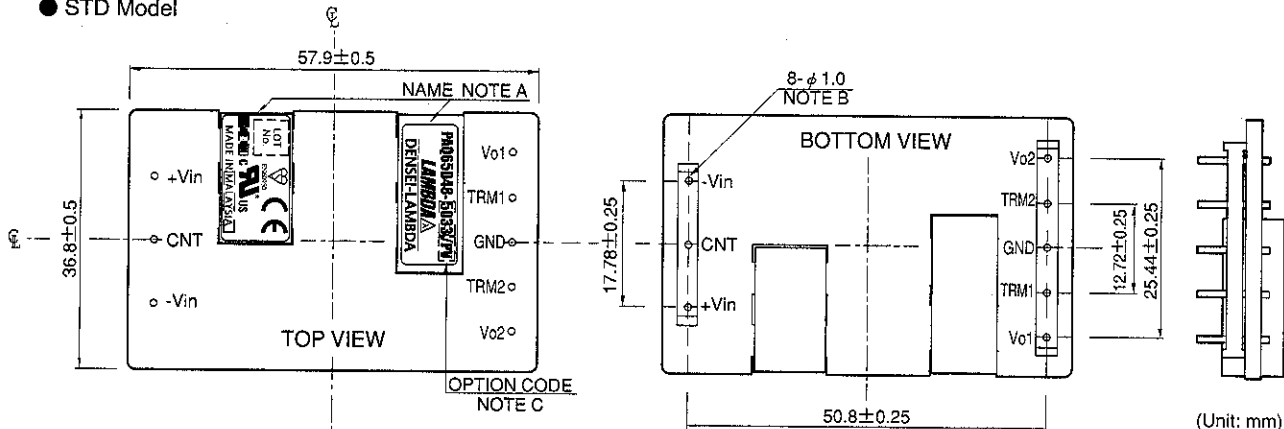
- Request customer specification for further details of specifications, outline, characteristics, etc. Read the instruction manual before usage.
- Contact us about delivery before ordering.

Product lineup

Model name	Output voltage		Output current (Io1+Io2=18A MAX)		Total Output power (Po1+Po2)	
	Vo1	Vo2	Io1	Io2		
PAQ65D48	PAQ65D48-2518	2.5V	1.8V	15A	17A	37.5W
	PAQ65D48-3318	3.3V	1.8V	15A	17A	49.5W
	PAQ65D48-3325	3.3V	2.5V	15A	17A	49.5W
	PAQ65D48-5033	5V	3.3V	13A	16A	65.0W

Outline drawing(2 trim type) For 1 trim type, outline drawing differs from the following. Please see DENISEI-LAMBDA web site.

● STD Model



C: OPTION

OPTION	ON / OFF LOGIC	OVP / OCP
STANDARD	NEGATIVE (H: OFF / L: ON)	SHUT DOWN (ON / OFF CONTROL RESET OR MANUAL RESET)
/P	POSITIVE (H: ON / L: OFF)	
/V	NEGATIVE (H: OFF / L: ON)	AUTO RESTART
/PV	POSITIVE (H: ON / L: OFF)	
/C	NEGATIVE (H: OFF / L: ON)	SHUT DOWN

=NOTE=

A: MODEL NAME, COUNTRY OF MANUFACTURE, LOT NO. AND SAFETY MARKING (BSI, C-UL-US & CE MARKING) ARE SHOWN HEAR IN ACCORDANCE WITH THE SPECIFICATIONS.

B: INPUT AND OUTPUT TERMINAL : 8-φ1.0