



## **PFC Modules**

## **Rectifier Modules**

## **DC-DC Transformer Modules**

## **EMI Filter Modules**

**PF Series** Power Factor Correction. These 90% efficient 500W and 1000W PFC modules are IEC/EN555-2 compliant, ensuring worldwide operation. They have integral diagnostics, auxiliary supply and control circuitry with densities to 90W/in<sup>3</sup>.

**PT Series** DC-DC Transformers. The PT-500 provides over 90W/in<sup>3</sup> with 93% efficiency, for a unique solution to distributed power front-ends. In addition, they allow integral UPS functions to be built directly into the power system (use with PF module as input only).

**PR Series** Rectifier Module. Designed for off-line switching applications, the PR500 rectifier provides 85-132 and 170-265VAC input with integral in-rush limiting, auxiliary supply, AC fail and in-rush control circuitry.

**PN and PBP Series** EMI Filters. Lambda's high attenuation, low leakage EMI filters are available from 1A to 15A for 110-240VAC operation. Their low 0.5" profile makes them ideal in either board or chassis mount applications for worldwide EMI compliance.

### **Similar products**

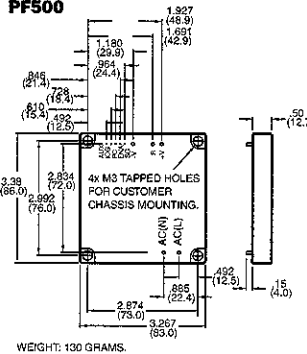
		<b>Page</b>
<b>PD600</b>	Complete Front End Module	64
<b>MF/MBX</b>	EMI Filters	102

- DC Input** ..... PF Modules – 85-265VAC, 47-63Hz.  
PR Modules – 85-132 or 170-265VAC Manual, Selectable, 47-63Hz.  
PT Modules – 360VDC from PF modules.
- Efficiency** ..... 90 to 95%.
- Power Factor Correction** .... 95% minimum at full load on PF modules which are IEC555-2 and EN60555-2 compliant.
- AC Power Fail** ..... AFC terminal is provided on PR modules for AC fail detection.
- Output Voltage Adj Range** .. PF Modules: 360VDC  $\pm 2\%$  fixed.  
PR Modules: 280VDC unregulated  
PT500-48: 48VDC nominal.  
PT500-65: 65VDC nominal.
- Line Regulation** ..... 5V typical on PF modules with constant load. Not applicable on PT modules. Regulated input required from PF.
- Load Regulation** ..... 10V typical with constant input line on PF modules. 10V on PT modules.
- Ripple and Noise** ..... Dependent on output capacitor.
- Parallel Operation** ..... PF modules have single star point connection of PC terminal which enables modules to share. PT modules are also capable of N+1 operation using forced regulation current sharing.
- Overcurrent Protection** ..... PF modules shut down the inverter in the event of overcurrent condition. PT modules limit the current to 105-150% of current rating.
- Overvoltage Protection** ..... 115%-130% on PT modules. 390-400VDC on PF modules. Inverter shutdown protects against excessive temperatures. Input power must be recycled to restore operation.
- Cooling** ..... Conduction cooled.
- Operating Temperature Range** -20°C to +85°C with no derating.
- Storage Temperature** ..... -40°C to +85°C.
- Temperature Coefficient** .... 0.02%/°C (-10°C to +60°C).
- Isolation** ..... Input to Output: 3000VAC (PN, PR & PF modules are not isolated).  
Input to Baseplate: 2500VAC  
100M $\Omega$  Output to baseplate: 100M $\Omega$  at +500VDC 70% RH.
- Output Good Signal** ..... PR and PF modules have an ENA terminal to control the DC-DC converters (PH, PT Series) during start-up, thereby guaranteeing proper start-up when power is applied.
- Inverter Good Signal** ..... PF and PT modules provide an inverter good status at the IOG terminal when the module is healthy.
- Overtemperature Protection** . Inverter shutdown on PF modules protects against excessive temperatures. Input power must be recycled to restore operation.
- External Components** ..... Application notes are available to guide the selection of the external components.
- Safety Agency Approval** .... All models are UL 1950 recognized, CSA234 certified and EN60950 approved.
- Warranty** ..... 2 years.

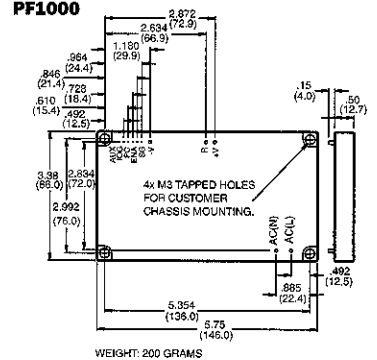
MODEL	VOLTAGE (VDC)	POWER (W)	INPUT VOLTAGE
<b>PF1000A-360</b>	360	1008	85-265VAC
	360	1512	170-265VAC
<b>PF500A0360</b>	360	504	85-265VAC
	360	756	170-265VAC
<b>PT500-48</b>	48	500	360VDC
<b>PT500-66</b>	66	500	360VDC
<b>PR500-280</b>	280	500	85-265VAC
	80	750	170-265VAC

Note: Now the PR500 Rectifier is designed for off-line switching applications, providing 85-132 and 170-265VAC input with integral in-rush limiting, Auxiliary supply, AC fail and in-rush control circuitry.

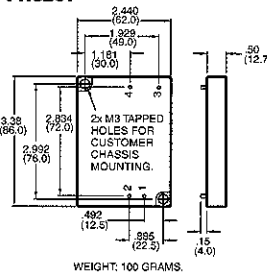
**PF500**



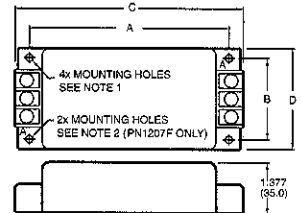
**PF1000**



**PN3207**



**PN1200F/PN1210F/PN1215F**



**DIMENSIONS:**

MODEL	A	B	C	D
PN1207F	5.196 (132.0)	1.732 (44.0)	5.944 (151.0)	2.047 (52.0)
PN1210F	5.196 (132.0)	2.125 (54.0)	5.944 (151.0)	2.837 (72.0)
PN1215F	5.884 (149.5)	3.228 (82.0)	6.732 (171.0)	3.740 (95.0)

- NOTE:**
- 4x .188 (4.8) HOLES FOR CUSTOMER CHASSIS MOUNTING.
  - 2x .188 (4.8) HOLES, MARKED 'A' FOR CUSTOMER CHASSIS MOUNTING.

**NOTE: DIMENSIONS ARE IN INCHES EXCEPT DIMENSIONS ( ) ARE IN MM.**

**PR500**

