

15-90

WATTS

POWER SUPPLY AC/DC

**SINGLE OR DUAL
OUTPUT**

Front panel voltage selection

Low noise and ripple

Low leakage current

DC 'on' LED indicator

Guarantee 5 years

INPUT

| | |
|--------------------------|--|
| Input voltage range | 85-115V / 98-132V 170-230V / 195-265VAC |
| Selectable | front panel access |
| Input frequency | 47-63Hz |
| Input protection | front panel fuse |
| Inrush current (typical) | 10A at 100VAC 20A at 200VAC |
| Thermal protection | standard |
| Earth leakage | 50µA (typical) |

OUTPUT

| | |
|------------------------------------|---------------------------|
| Power (convection cooled) | 15 to 90 W |
| Voltage adjustment range | ± 10% |
| Line regulation | ± 0.01% |
| Load regulation (100% load charge) | ± 0.05% |
| Ripple and noise | 1mV RMS, 3mV peak to peak |
| Temperature coefficient | 0.02%/°C |
| Remote programming resistance | 1000Ω/volt (NNS only) |
| Remote programming voltage | volt for volt (NNS only) |
| Over current protection | current limit |
| Over voltage protection | standard |
| Remote sense | standard on NNS |

GENERAL

| | |
|---------------------|---|
| MTBF | Consult with Technical Sales |
| Isolation voltage : | |
| Input-output | 3kVAC |
| Input-ground | 2.5kVAC |
| Output-ground | 500VAC |
| Parallel operation | Possible with current sharing on NNS only |
| Series operation | Possible on NND only |
| DC 'on' indicator | Green LED |

ENVIRONMENTAL

| | | |
|--|---|------|
| Operating temperature | -20°C to +71°C | |
| Derating | -20°C : | 60% |
| | 0°C to +50°C : | 100% |
| | +60°C : | 60% |
| | +71°C : | 40% |
| Storage temperature | - 40°C to + 85°C | |
| Operating humidity (non condensing) | 30% to 95% RH | |
| Storage humidity (non condensing) | 10% to 95% RH | |
| Shock | 20G | |
| Vibration | 5G. Amplitude 10-55Hz | |
| EMI | conforms to EN 55022, FCC 20780B, VCCI Class A | |

Efficiency (type.) :

| Model | Efficiency |
|----------------------------|------------|
| NNS 15 / 30 - 5 | 35% |
| NNS 15 / 30 - 12 | 45% |
| NND 15 / 30 - 1212 or 1515 | 45% |
| NNS 50-5 | 45% |
| NNS 15 / 30 - 15 | 46% |
| NNS 15 / 30 - 24 | 50% |
| NNS 50-12 | 51% |
| NNS 50-15 | 52% |
| NNS 50-24 | 56% |

TABLE OF MODELS

| Model | Case | Max. power Watts | Output 1 | | Output 2 | |
|-------------|------|------------------------|----------|------|----------|------|
| | | | Volts | Amp. | Volts | Amp. |
| NNS 15 5 | 15 | 15.0 | 5 | 3.0 | | |
| NNS 30 5 | 30 | 30.0 | | 6.0 | | |
| NNS 50 5 | 50 | 50.0 | | 10 | | |
| NNS 15 12 | 15 | 20.4 | 12 | 1.7 | | |
| NNS 30 12 | 30 | 48.0 | | 4.0 | | |
| NNS 50 12 | 50 | 78.0 | | 6.5 | | |
| NNS 15 15 | 15 | 21.0 | 15 | 1.4 | | |
| NNS 30 15 | 30 | 51.0 | | 3.4 | | |
| NNS 50 15 | 50 | 82.5 | | 5.5 | | |
| NNS 15 24 | 15 | 21.6 | 24 | 0.9 | | |
| NNS 30 24 | 30 | 55.2 | | 2.3 | | |
| NNS 50 24 | 50 | 91.2 | | 3.8 | | |
| NND 15 1212 | 15D | 18.0 | 12 | 0.75 | 12 | 0.75 |
| NND 30 1212 | 30D | 38.4 | | 1.6 | | 1.6 |
| NND 15 1515 | 15D | 18.0 | 15 | 0.6 | 15 | 0.6 |
| NND 30 1515 | 30D | 39.0 | | 1.3 | | 1.3 |

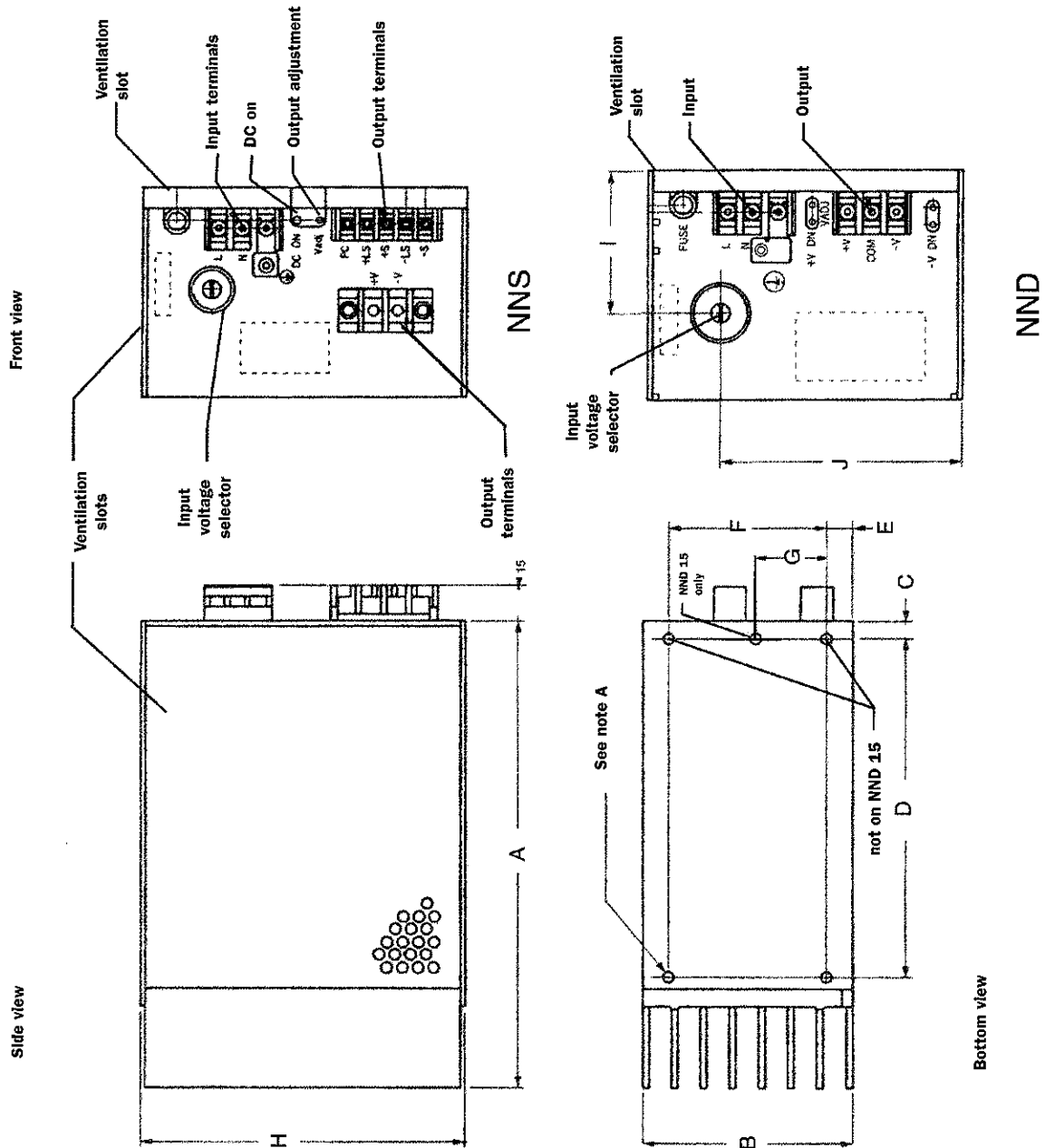
Series NN

LAMBDA 
An Invensys company

EDITION 2001

CASES 15 - 30

Note A : mounting holes M4



| Case | Dimensions (mm) | | | | | | | | | |
|--------|-----------------|--------|----|-----------|------|----------|------------|-----------|----|----|
| | A | B | C | D | E | F | G | H | I | J |
| NNS 15 | 124 ± 1 | 60 ± 1 | 19 | 83 ± 0.5 | 10 | 40.5 | - | 124 ± 1 | - | - |
| NNS 30 | 178 ± 1 | 80 ± 1 | 7 | 128 ± 0.5 | 10 | 60 ± 0.5 | - | 124 ± 1 | - | - |
| NND 15 | 150 ± 1 | 60 ± 1 | 15 | 127 ± 0.5 | 17.5 | 25 ± 0.5 | 12.5 ± 0.5 | 113.5 ± 1 | 39 | 87 |
| NND 30 | 164 ± 1 | 80 ± 1 | 6 | 128 ± 0.5 | 10 | 60 ± 0.5 | - | 113.5 ± 1 | 50 | 89 |

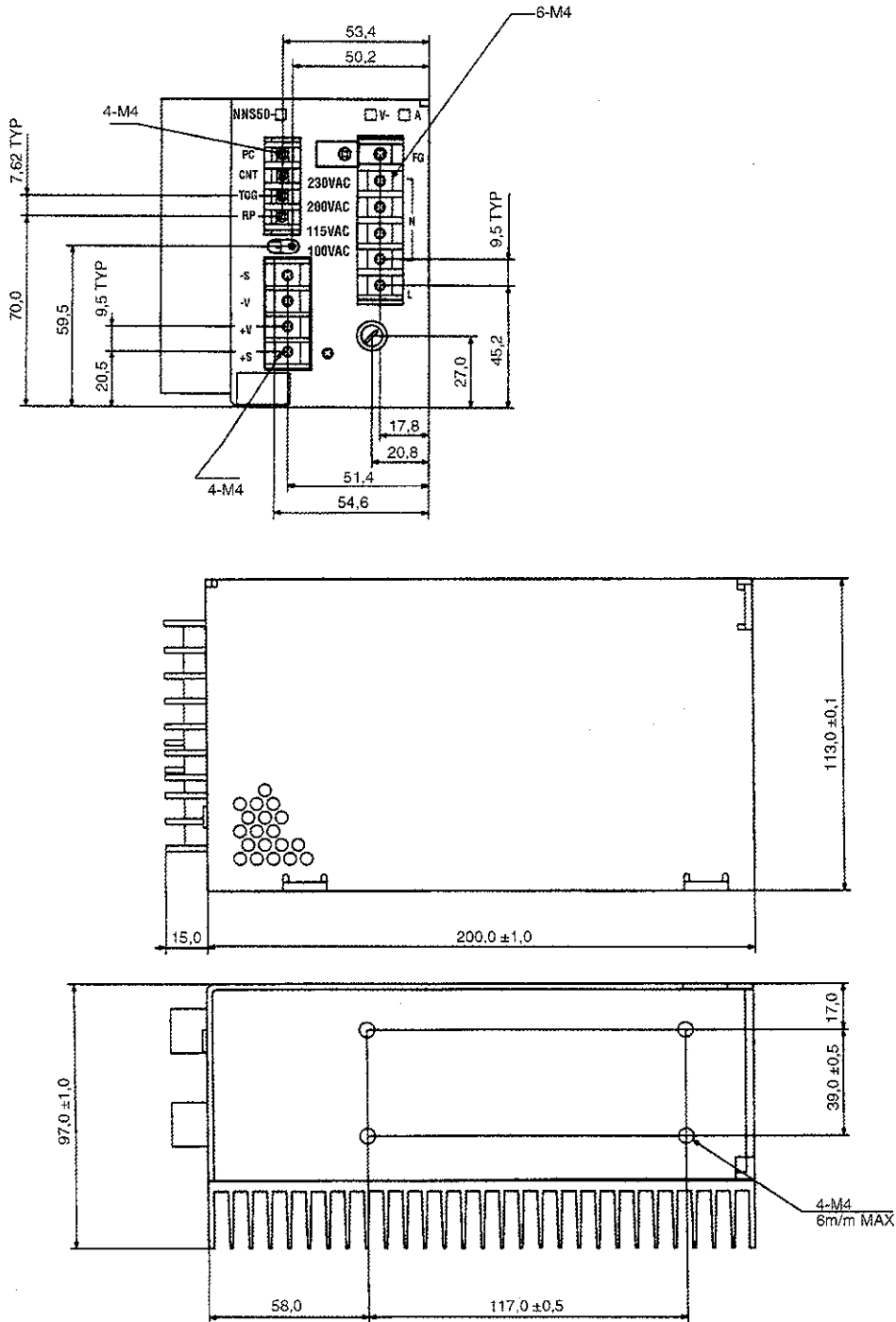
EDITION 2001



An Invensys company

Series NN

CASE 50



CONNECTIONS

| | |
|------------------|--------------------|
| Input and output | terminal blocks M4 |
| Signals | terminal blocks M3 |
| Format | fully enclosed |

Series NN

LAMBDA
An Invensys company