

Features

- (1) For equipment designed to conform EMI regulations such as VCCI, CISPR, FCC, VDE, etc.
- (2) Attenuation effect against high voltage pulse noise
- (3) Attenuates conductive emission from power supply
- (4) Leakage current: 1mA max. (250V, 60Hz)
- (5) High shielded effect

Safety standard

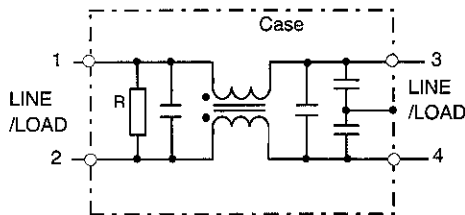
- UL1283, CSA Std. C22. 2 No. 8
- VDE0565 Teil. 3

Specifications

Item	Model	MBW-12R5-22	MBW-1201-22	MBW-1202-22	MBW-1203-22	MBW-1205-22
1	Rated voltage (AC, DC)	250V				
2	Rated current (AC, DC) (Note)	0.5A	1A	2A	3A	5A
3	Test voltage (terminal to case, AC 1 minute)	2500V				
4	Isolation resistance (terminal to case, 500VDC)	100MΩ min.				
5	Leakage current	125V, 60Hz		0.5mA max.		
		250V, 60Hz		1mA max.		
6	DC resistance	5Ω max.	1.5Ω max.	0.6Ω max.	0.3Ω max.	0.2Ω max.
7	Temperature rise	30°C max.				
8	Operating temperature range	-25 ~ +85°C				
9	Weight (typ)	95g	95g	95g	160g	290g

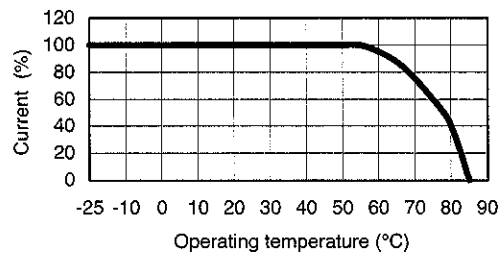
(Note) : Value at Ta ≦ 55°C. Refer to the derating curve shown below at Ta > 55°C.

Circuit



R: Breeder resistance

Derating

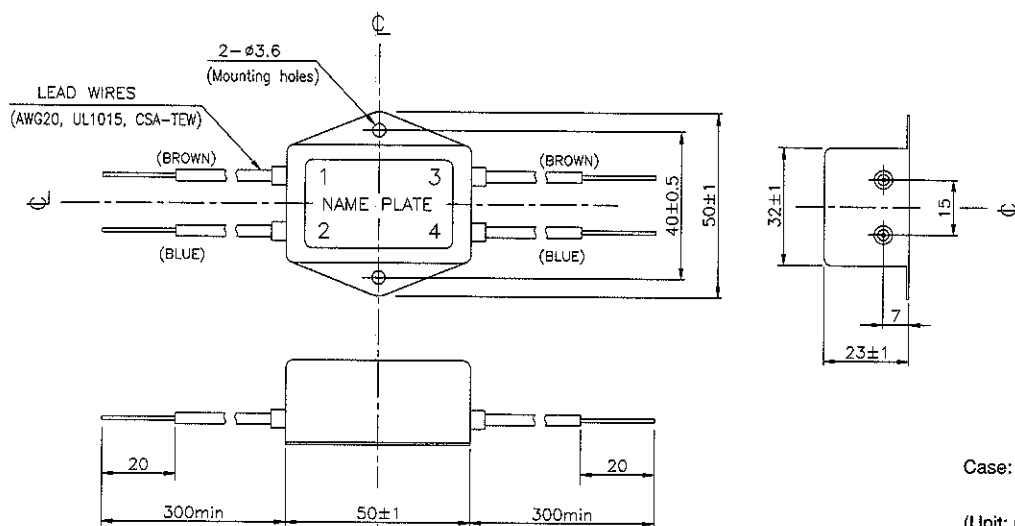


Noise Filter

- Request customer specification for further details of specifications, outline, characteristics, etc.
- Read the instruction manual before usage.
- Contact us about delivery before ordering.

MBW-SERIES

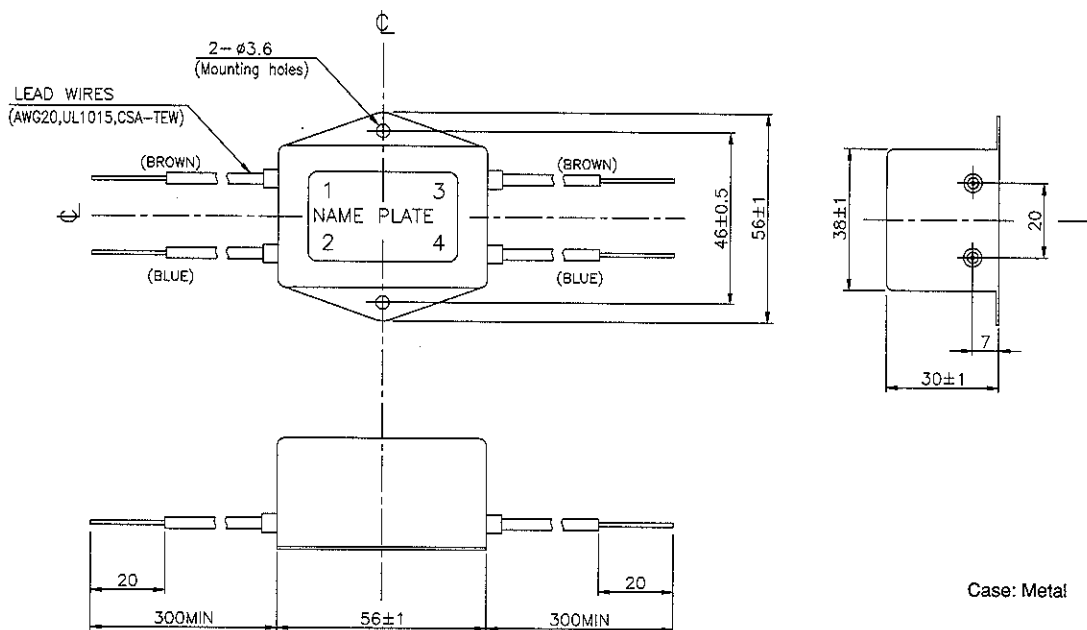
- MBW-12R5-22
- MBW-1201-22
- MBW-1202-22



Case: Metal

(Unit: mm)

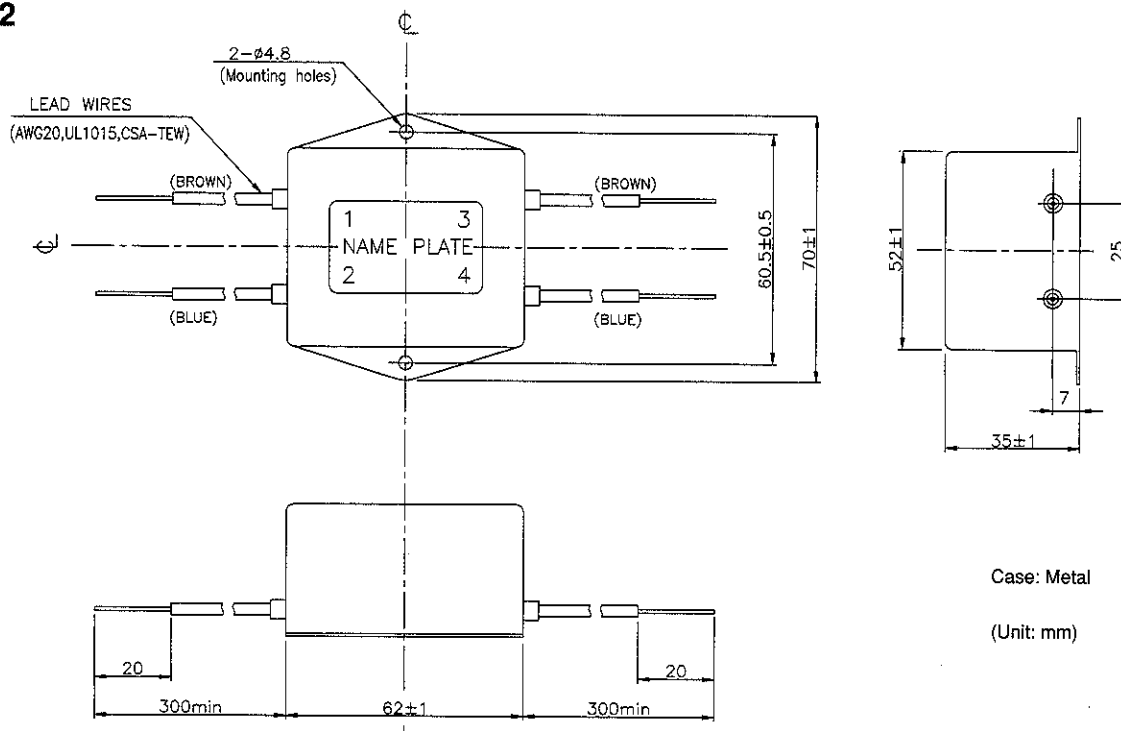
- MBW-1203-22



Case: Metal

(Unit: mm)

- MBW-1205-22



Case: Metal

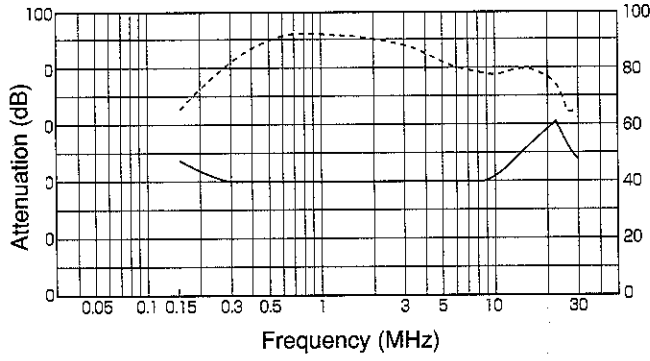
(Unit: mm)

Noise Filter

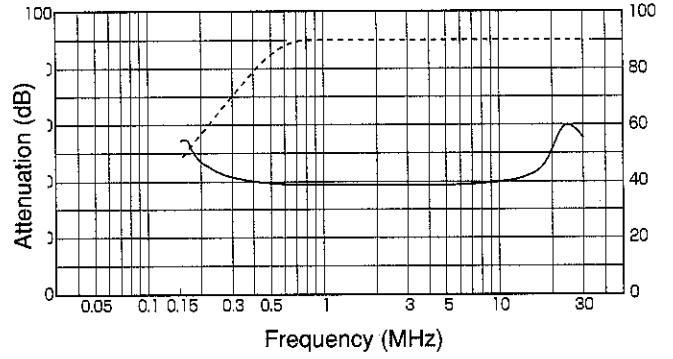
CHARACTERISTICS

■ Typical Insertion Loss Symmetrical
 — Asymmetrical

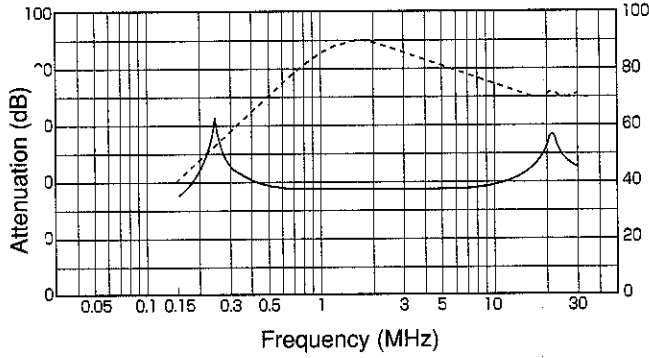
MBW-12R5



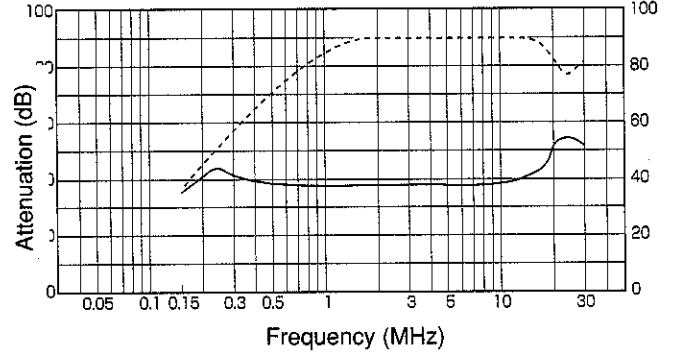
MBW-1201



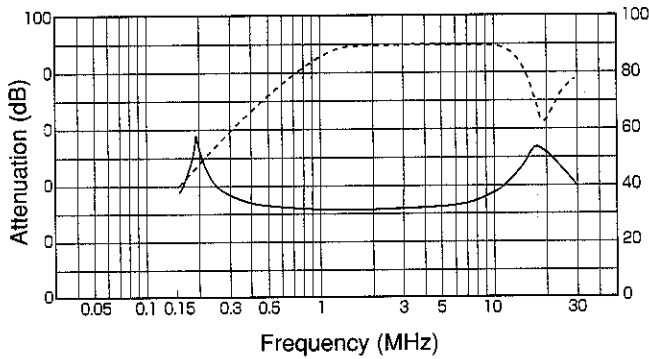
MBW-1202



MBW-1203



MBW-1205



Noise Filter