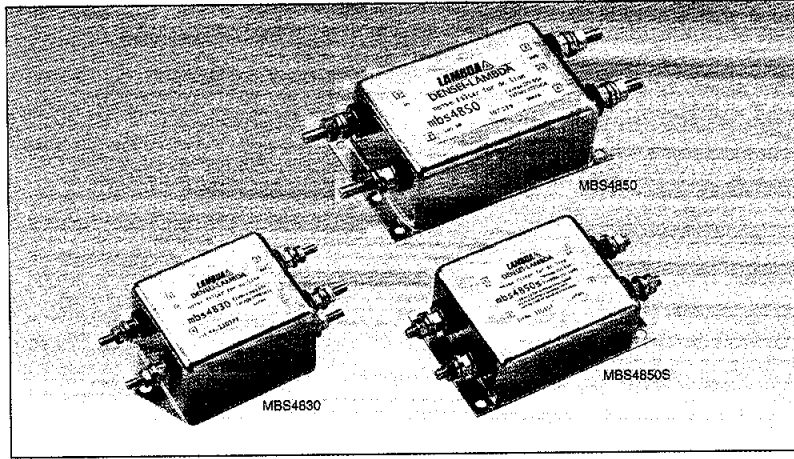


# MBS48-SERIES

(DC line filter)



## Features

- 1) High attenuation for any noise from low frequency to high frequency by applying large capacity condenser for DC 48V power line  
Major application: Information and telecommunication equipment
- 2) Large stud terminal type  
Several wiring connections available
- 3) Cost saving design  
Compared with our current noise filter for the same capacity for AC input,  
Volume: Less than 30%  
Area occupation: Less than 45%

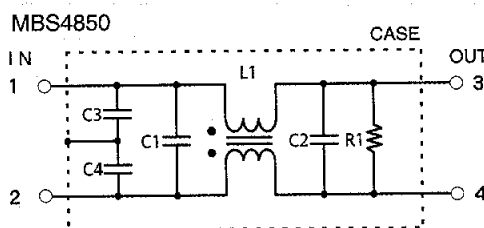
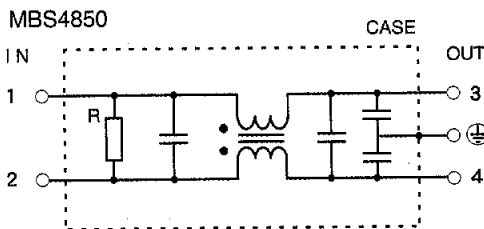
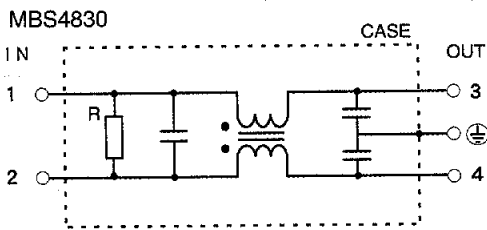
**CAUTION!** MBS48 series shall be noise filters for DC 48V power line only. Use for AC power line is not available.

## Specifications

Item	Model	MBS4830	MBS4850	MBS4850S
1	Rated voltage (DC)	48V (72V DC max)		48V (76V DC max)
2	Rated current (DC)	30A	50A	50A
3	Overload durability (DC)	45A (150% of rated current; within 1 min.)		75A (150% of rated current; within 1 min.)
4	Test voltage	700V(20mA) at 25°C, 70%RH		1500V(20mA) at 25°C, 70%RH
	terminal to terminal, DC 1 minute	100V(20mA) at 25°C, 70%RH		100V(20mA) at 25°C, 70%RH
5	Isolation resistance (terminal to case, 500VDC)	500MΩ min. at 25°C, 70%RH		
6	DC resistance	8mΩ	4mΩ	3mΩ
7	Temperature rise	35°C max.	30°C max.	40°C max.
8	Operating temperature	-25 ~ +85°C		
9	Operating humidity	30% ~ 95% RH (No dewdrop)		
10	Storage temperature	-40 ~ +85°C		-30 ~ +85°C
11	Storage humidity	10% ~ 95% RH (No dewdrop)		
12	Vibration	Sweep: 10 ~ 55 ~ 10 Hz (for 1 minute), Amplitude: 1.5 mm X, Y and conforms to Z axes for 2 hours		
13	Weight (typ)	310g	650g	310g

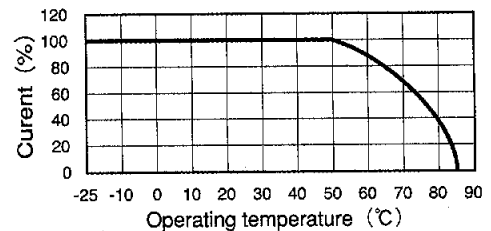
(Note1): Value at Ta ≤ 50°C. Refer to the derating curve shown below at Ta > 50°C.

## Circuit

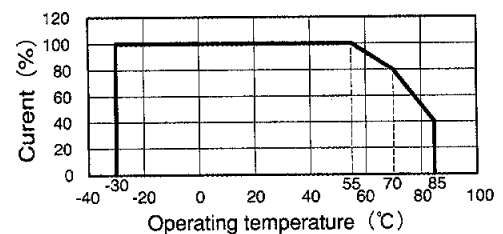


## Derating

MBS4830, MBS4850



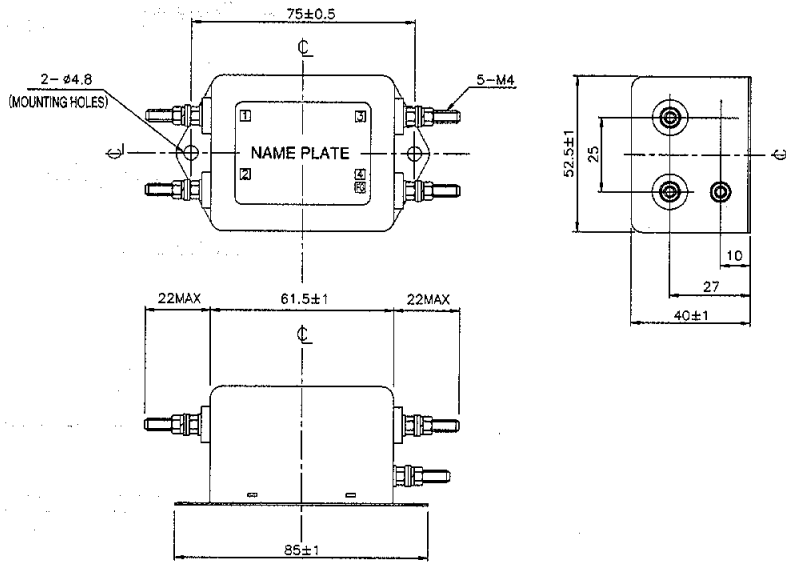
MBS4850S



- Request customer specification for further details of specifications, outline, characteristics, etc.
- Read the instruction manual before usage.
- Contact us about delivery before ordering.

# MBS48-SERIES

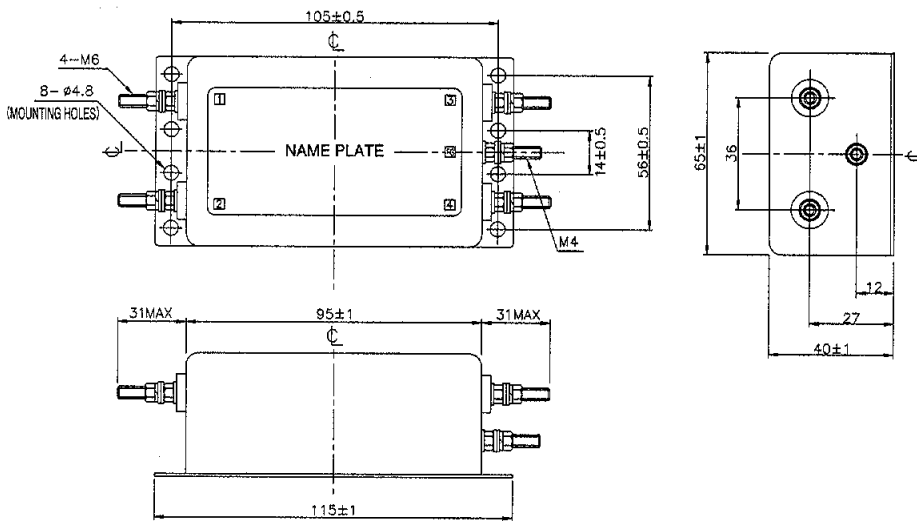
## ■ MBS4830



Case: Metal

(Unit: mm)

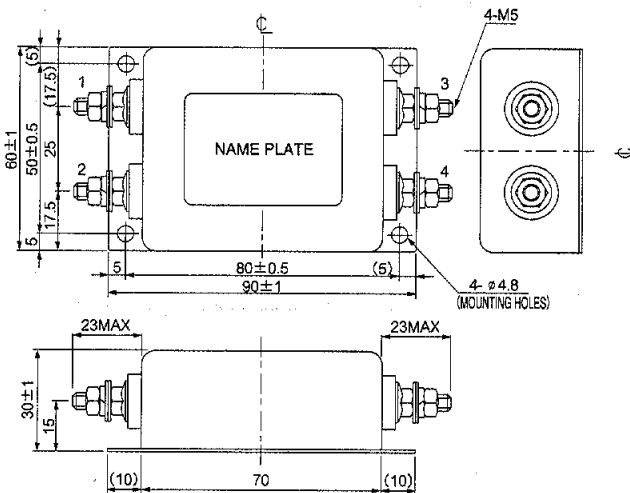
## ■ MBS4850



Case: Metal

(Unit: mm)

## ■ MBS4850



Case: Metal

(Unit: mm)

Noise Filter

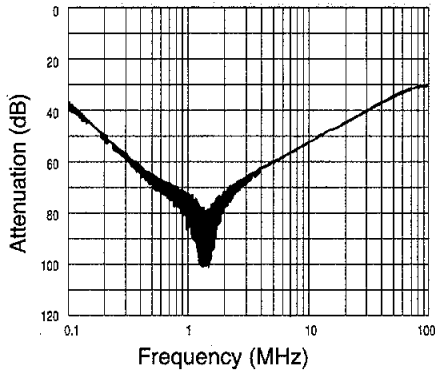
# MBS48-SERIES

## CHARACTERISTICS

### ■ Typical Insertion Loss

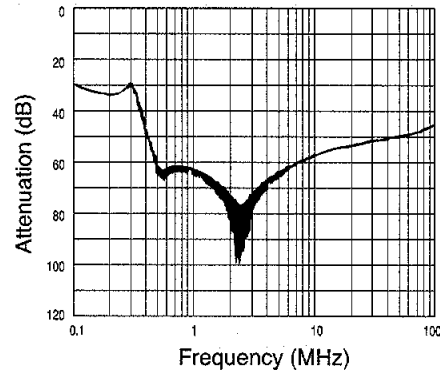
(1) Asymmetrical

#### ■ MBS4830

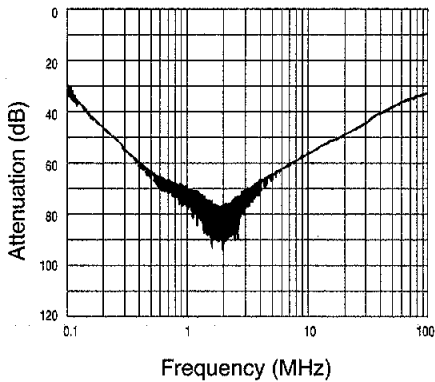


(2) Symmetrical

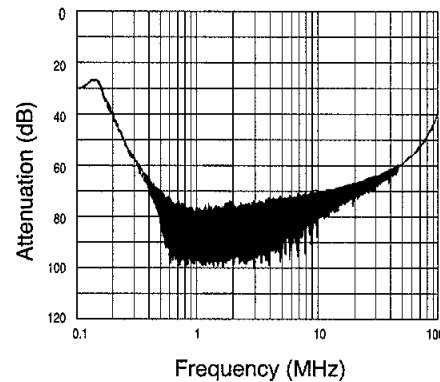
#### ■ MBS4830



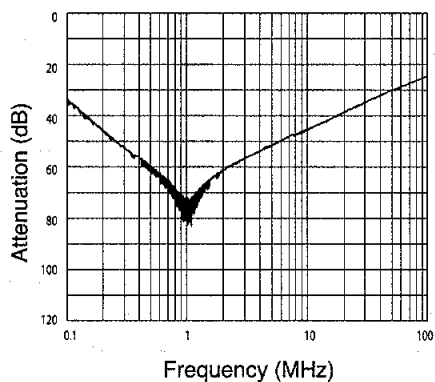
#### ■ MBS4850



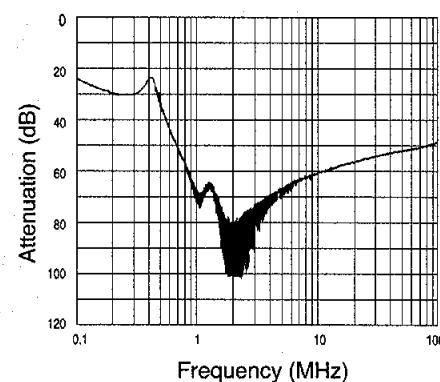
#### ■ MBS4850



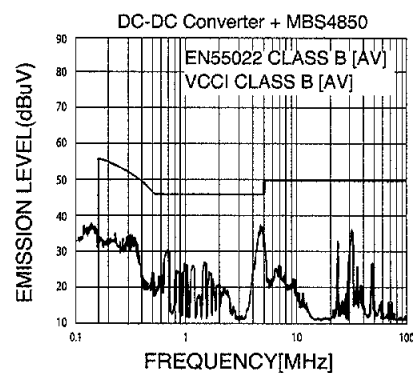
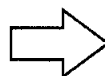
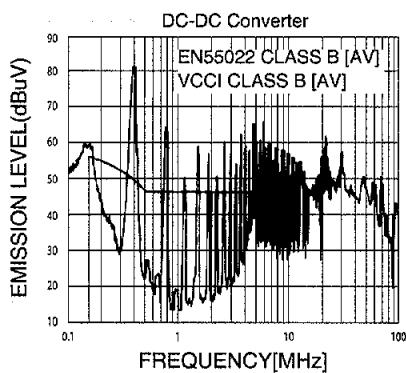
#### ■ MBS4850S



#### ■ MBS4850S



### ■ Attenuation characteristics MBS4850



Noise Filter