

■ Features

- (1) High attention for any noise from low frequency to high frequency by applying large capacity condenser for DC 48V power line.
Major application: Information and telecommunication equipment.
- (2) Large stud terminal type.
Several wiring connections available.
- (3) Cost saving design.
Compared with our current noise filter for the same capacity for AC input.
Volume: Less than 30%
Area occupation: Less than 45%

CAUTION!

The MBS series of noise filters are intended for 48Vdc operation, NOT AC power lines.

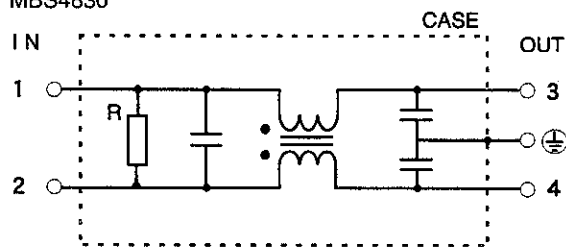
■ Specifications

Item	Model	MBS4830	MBS4850
1	Rated voltage (DC)	48V (72V DC max)	
2	Rated current (DC)	30A	50A
3	Overload durability (DC)	(Note1)	
		45A (150% of rated current: within 1 min.)	75A (150% of rated current: within 1 min.)
4	Test voltage	terminal to case, DC 1 minute	
		700V(20mA) at 25°C, 70%RH	
5	Test voltage	terminal to terminal, DC 1 minute	
		100V(20mA) at 25°C, 70%RH	
5	Isolation resistance (terminal to case, 500VDC)	500MΩmin. at 25°C, 70%RH	
6	DC resistance	8mΩ	4mΩ
7	Temperature rise	35°C max.	30°C max.
8	Operating temperature	-25 ~ +85°C	
9	Operating humidity	30% ~ 95% RH (No dewdrop)	
10	Storage temperature	-40 ~ +85°C	
11	Storage humidity	10% ~ 95% RH (No dewdrop)	
12	Vibration	Sweep: 10 ~ 55 ~ 10 Hz(for 1 minute), Amplitude: 1.5 mm X,Y and conforms to Z axes for 2 hours (Non Operational)	
13	Weight (typ)	310g	650g

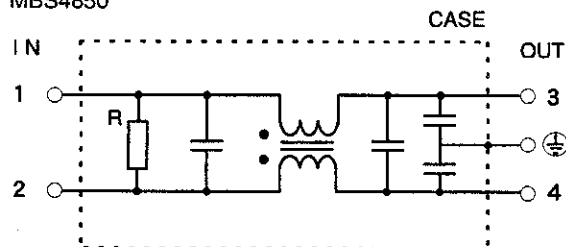
(Note1): Value at Ta ≤ 50°C. Refer to the derating curve shown below at Ta > 50°C.

■ Circuit

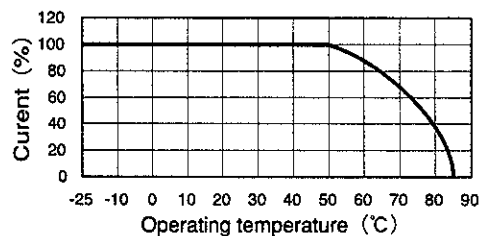
MBS4830



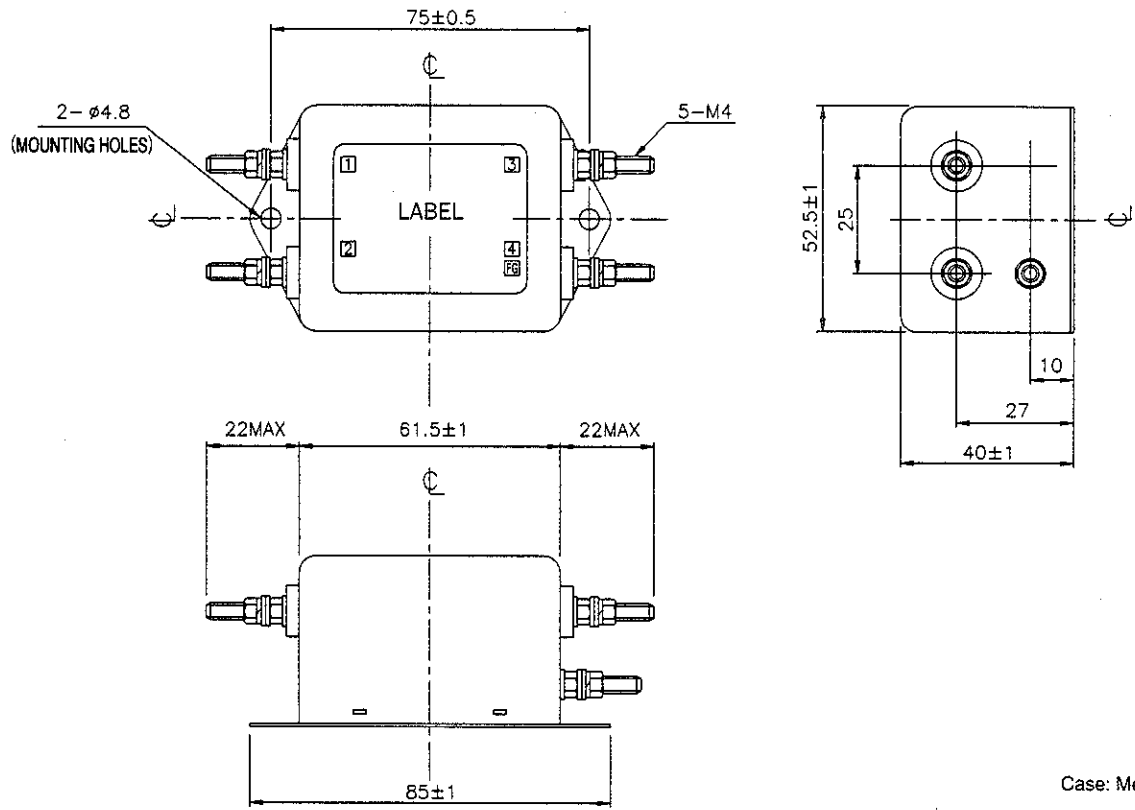
MBS4850



■ Derating



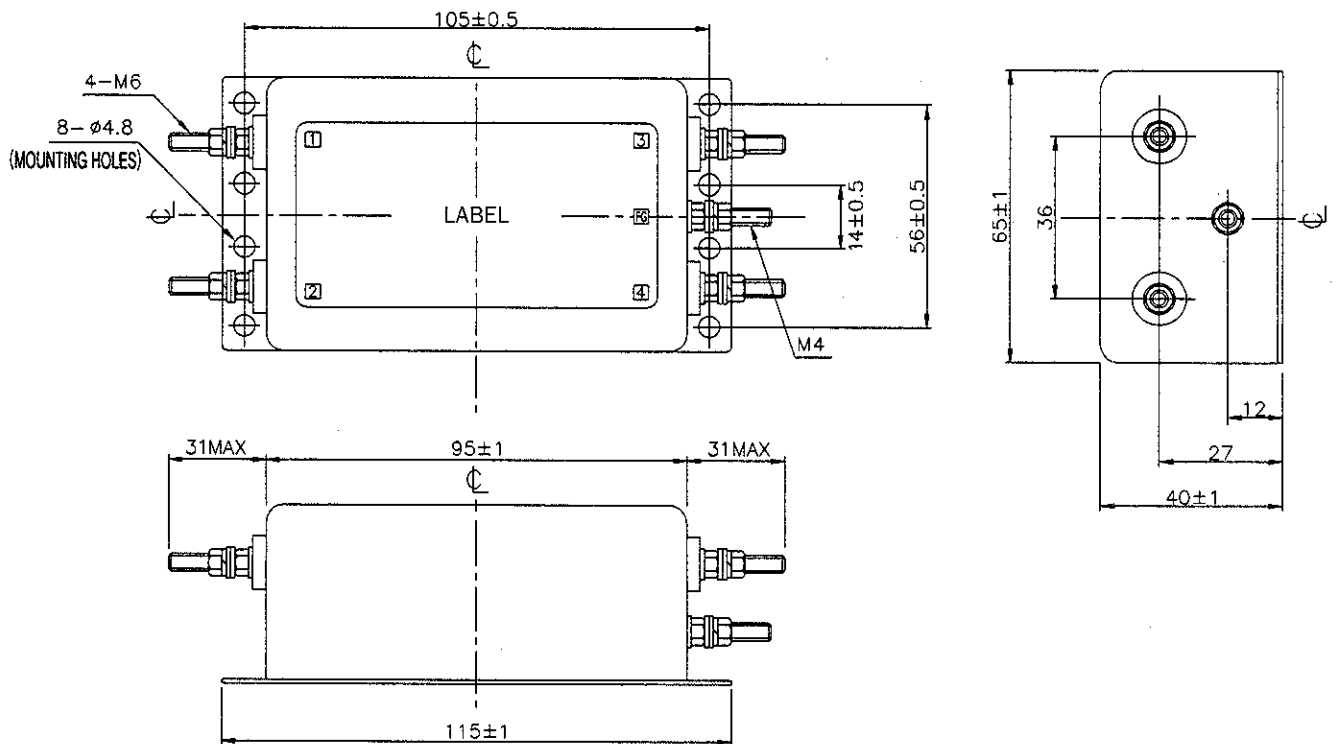
■ MBS4830



Case: Metal

(Unit: mm)

■ MBS4850



Case: Metal

(Unit: mm)

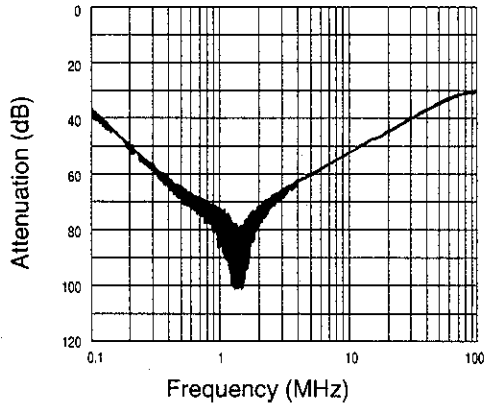
CHARACTERISTICS

■ Typical Insertion Loss

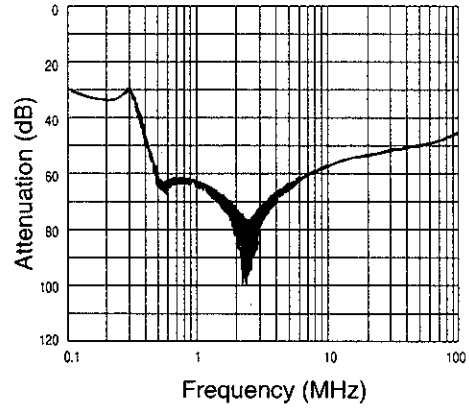
(1) Asymmetrical

(2) Symmetrical

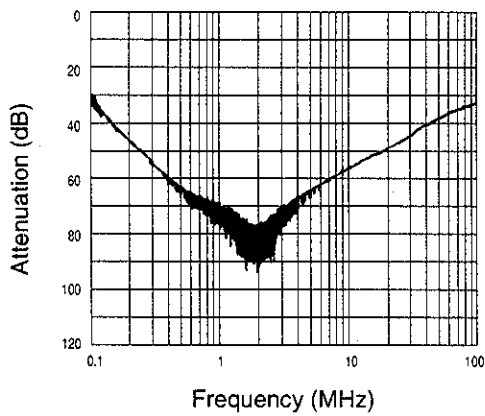
■ MBS4830



■ MBS4830



■ MBS4850



■ MBS4850

