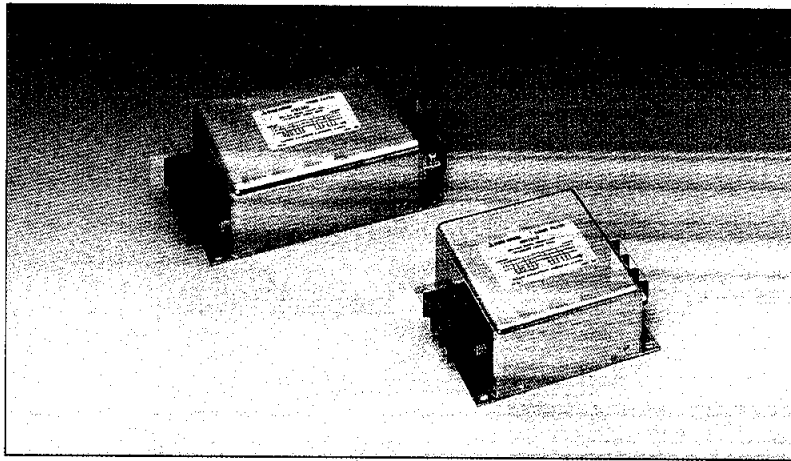


# MB13-SERIES

Three Phase Input Noise Filter with Block Terminal



### Features

- (1) Block Terminal with Cover  
Simple wire connection by block terminal.  
High safety by terminal cover.
- (2) Three Phase Power Line Filter  
Available for Star connection : 400Vac line-line  
Available for Delta connection : 200Vac line-line
- (3) High Attenuation in Compact Package

### Safety standard

- UL1283,
- CSA Std. C22. 2 No. 8
- EN133200 (New European Standard)

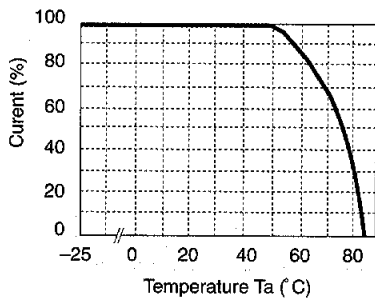
### Specifications

ITEMS	MODEL	MB1310	MB1320	MB1330	MB1340	MB1350
1	Rated Voltage (AC)	500V(50/60Hz)				
2	Rated Current (AC) (Note 1)	10A	20A	30A	40A	50A
3	Test Voltage	2500VAC(20mA) Terminal to case, 1min. at 25°C, 70%RH				
4	Isolation Resistance	100MΩ min. Terminal to case, 500VDC at 25°C, 70%RH				
5	Leakage Current	250V 60Hz	1.0mA max.			
		500V 60Hz	2.0mA max.			
6	DC Resistance	80m Ω max.	30m Ω max.	20m Ω max.	11m Ω max.	7m Ω max.
7	Temperature Rise	35°C max.				
8	Operating Temperature	-25°C~+85°C				
9	Operating Humidity	30%~95% RH (No Dewdrop)				
10	Storage Temperature	-40°C~+85°C				
11	Storage Humidity	10%~95% RH (No Dewdrop)				
12	Vibration	10~55~10Hz, Amplitude (Sweep for 1min) 1.5mm(9G max.) X,Y,Z 2 hours each				
13	Safety Standard	Built to meet : UL1283, CSA C22.2 No.8, EN133200				
14	Weight (typ)	1800g	1800g	1800g	2800g	2800g
15	MTBF(hours) (Note 2)	573,000	480,000	521,000	421,000	395,000

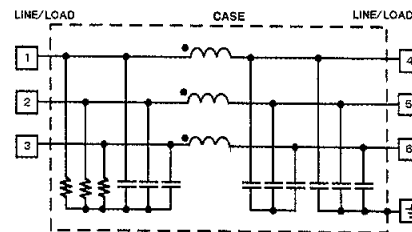
(Note1): Value for  $T_a \leq 50^\circ\text{C}$ . For  $T_a > 50^\circ\text{C}$  derate according to the derating curve shown below.

(Note2): Calculated based on the part stress analysis prediction method as specified in MIL-HDBK-217F.

### DERATING

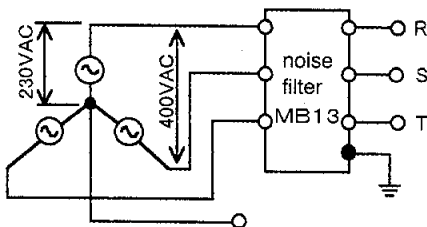


### CIRCUIT

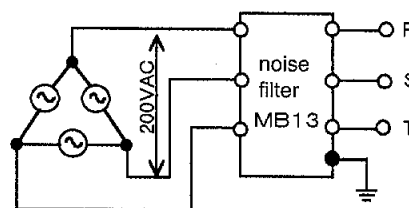


### APPLICATIONS

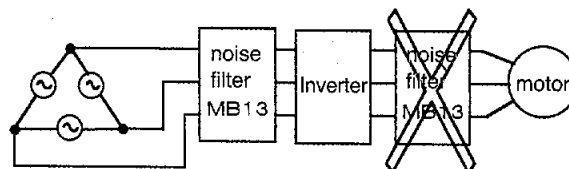
Star connection  
3 Phase 4 Wires 400V line-line. Unused Neutral line



Delta Connection  
3 Phase 3 Wires 200V line-line



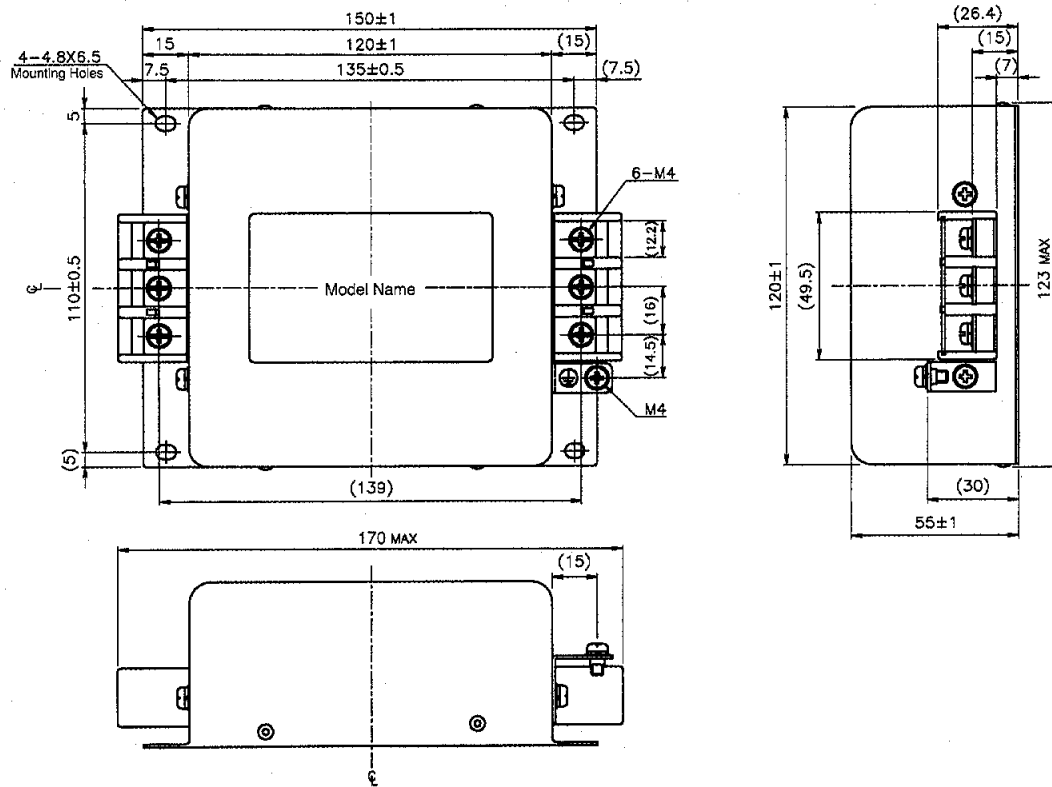
Note: For inverter application  
Do not use MB series between  
inverter and motor.



Noise Filter

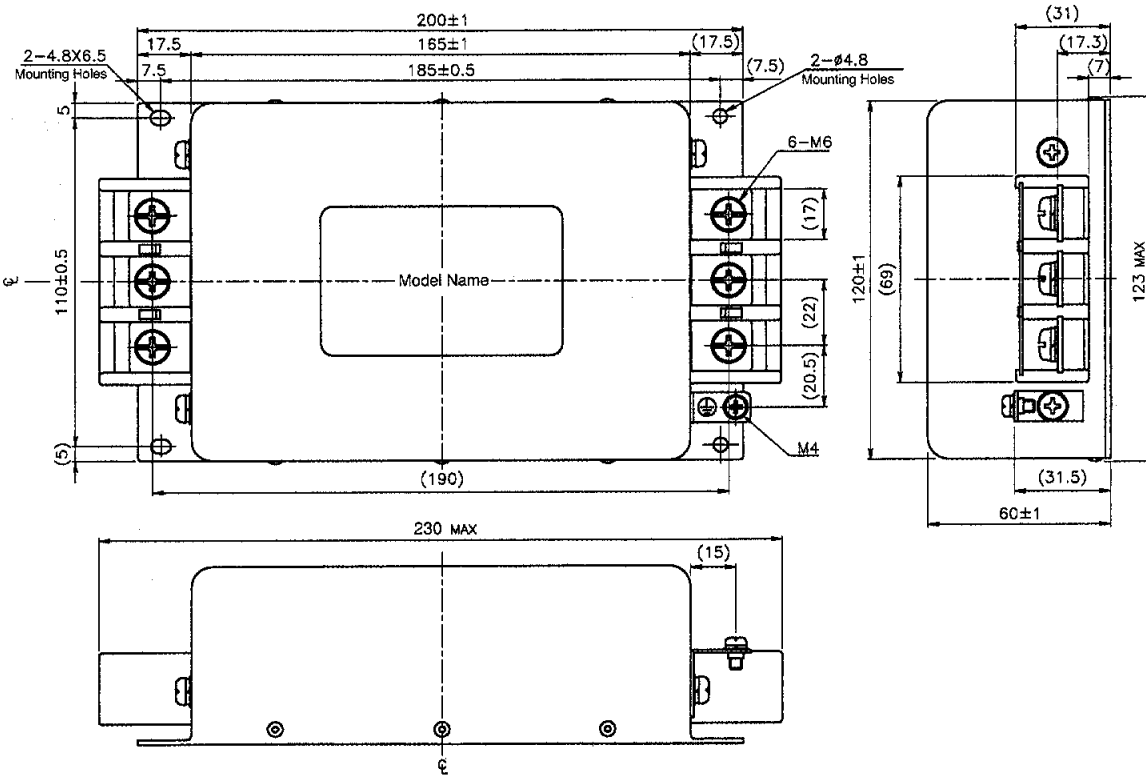
# MB13-SERIES

- MB1310
- MB1320
- MB1330



**Noise Filter**

- MB1340
- MB1350



(Unit: mm)

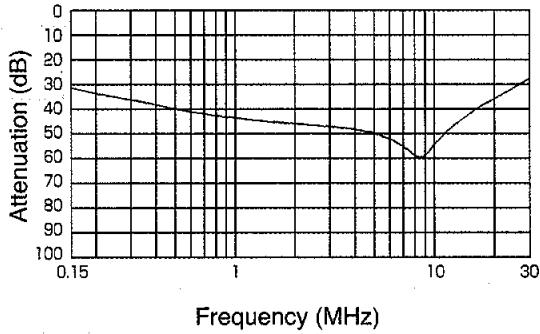
# MB13-SERIES

## CHARACTERISTICS

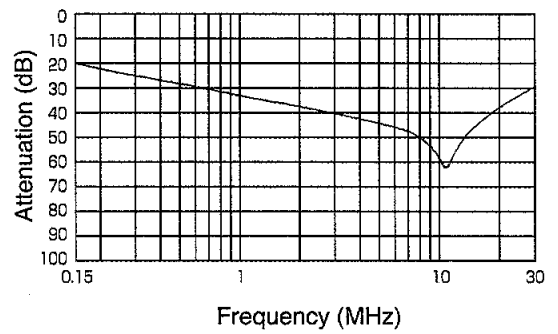
### ■ Typical Insertion Loss

(1) Asymmetrical

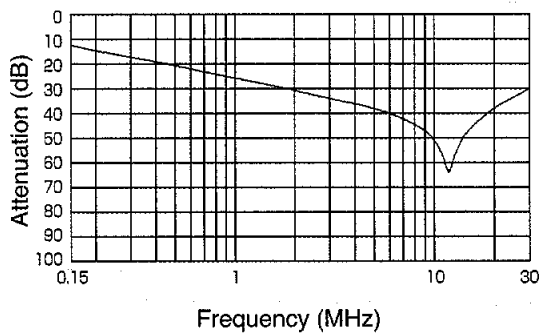
#### MB1310



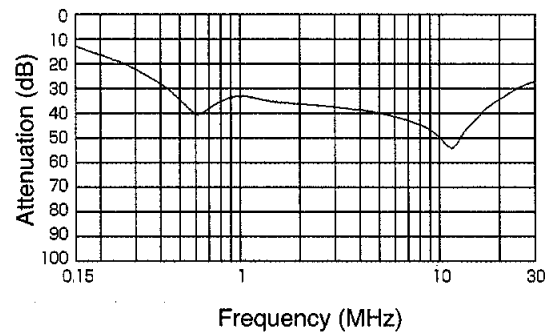
#### MB1320



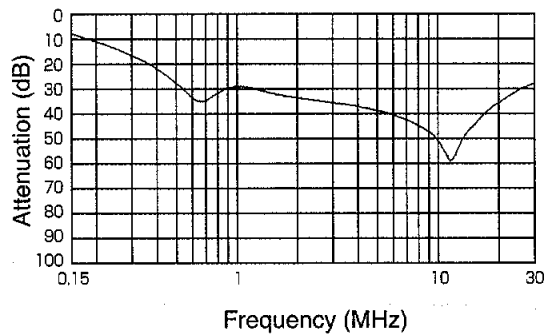
#### MB1330



#### MB1340



#### MB1350



Noise Filter

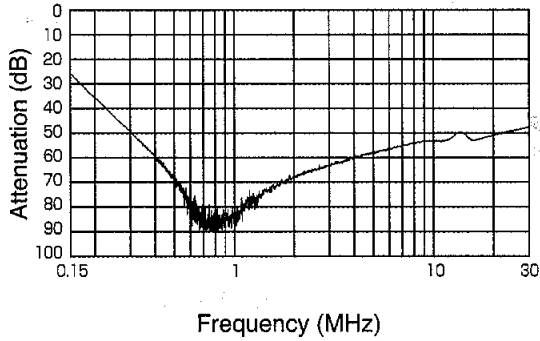
# MB13-SERIES

## CHARACTERISTICS

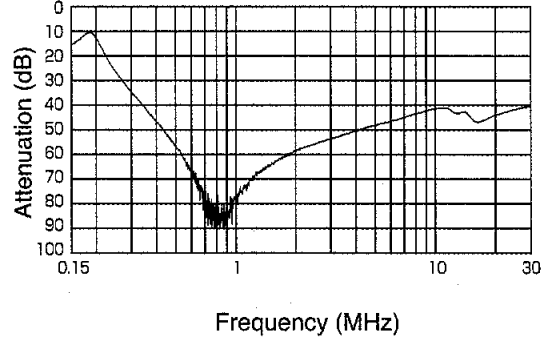
■ Typical Insertion Loss

(2) Symmetrical

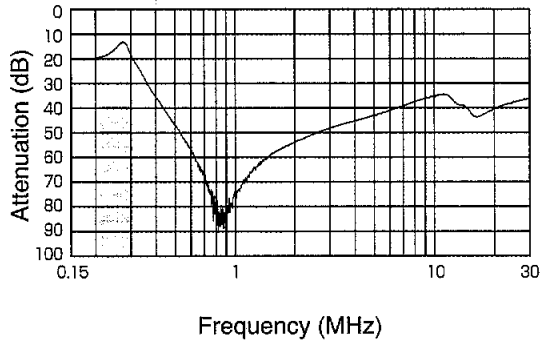
**MB1310**



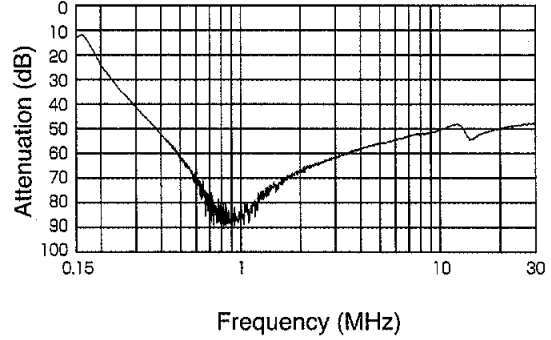
**MB1320**



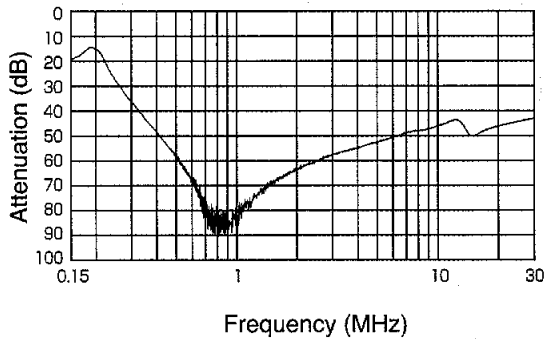
**MB1330**



**MB1340**



**MB1350**



Noise Filter