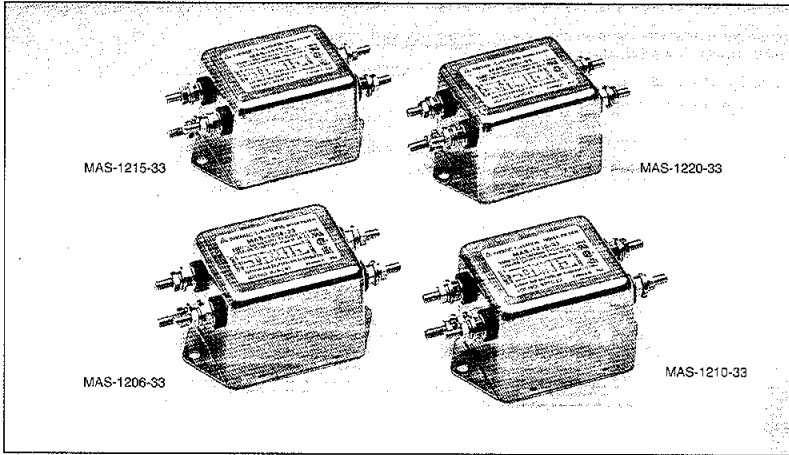


MAS-SERIES



Features

- (1) For equipment designed to conform EMI regulations such as VCCI, CISPR, FCC, VDE, etc.
- (2) Attenuation effect against high voltage pulse noise
- (3) Attenuates conductive emission from power supply
- (4) Leakage current: 1mA max. (250V, 60Hz)
- (5) High shielded effect
- (6) Compact and light weight

Safety standard

- UL1283, CSA Std. C22. 2 No. 8
- VDE0565 Teil. 3
(VDE0565 will transfer to EN133200 on and after July 23, 2003.)

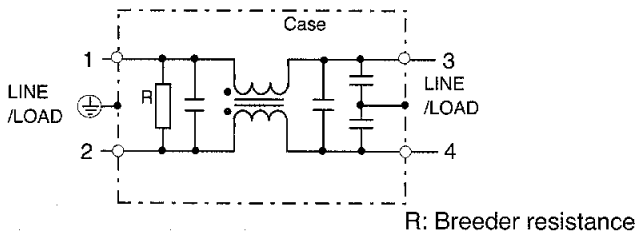
Specifications

| Item | Model | MAS-1206-33 | MAS-1210-33 | MAS-1215-33 | MAS-1220-33 |
|------|---|-------------|-------------|-------------|-------------|
| 1 | Rated voltage (AC, DC) | 250V | | | |
| 2 | Rated current (AC, DC) (Note) | 6A | 10A | 15A | 20A |
| 3 | Test voltage (terminal to case, AC 1 minute) | 2500V | | | |
| 4 | Isolation resistance (terminal to case, 500VDC) | 100MΩ min. | | | |
| 5 | Leakage current | 125V, 60Hz | | | |
| | | 250V, 60Hz | | | |
| 6 | DC resistance | 0.10Ω max. | 0.05Ω max. | 0.03Ω max. | 0.02Ω max. |
| 7 | Temperature rise | 30°C max. | | | |
| 8 | Operating temperature range | -25 ~ +85°C | | | |
| 9 | Weight (Typ) | 310g | | | |

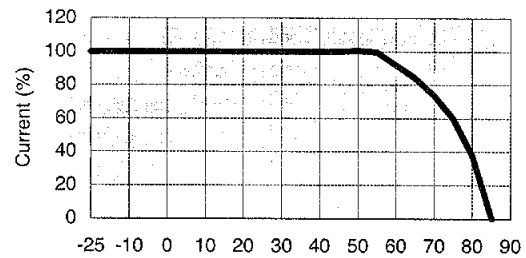
(Note) : Value at Ta ≤ 55°C. Refer to the derating curve shown below at Ta > 55°C.

Noise Filter

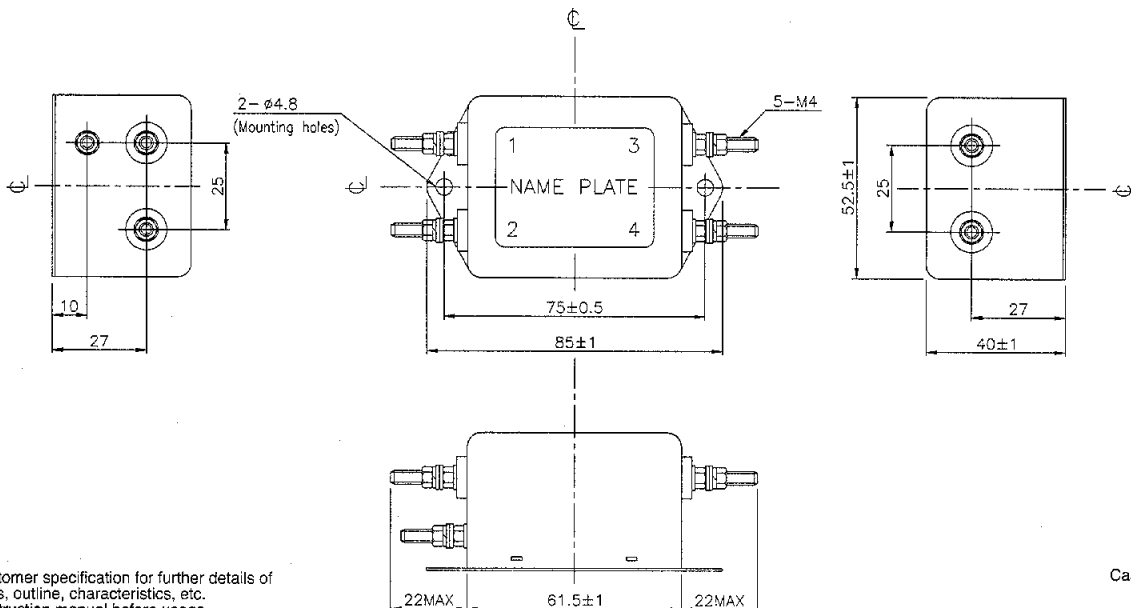
Circuit



Derating



Outline drawings



- Request customer specification for further details of specifications, outline, characteristics, etc. Read the instruction manual before usage.
- Contact us about delivery before ordering.

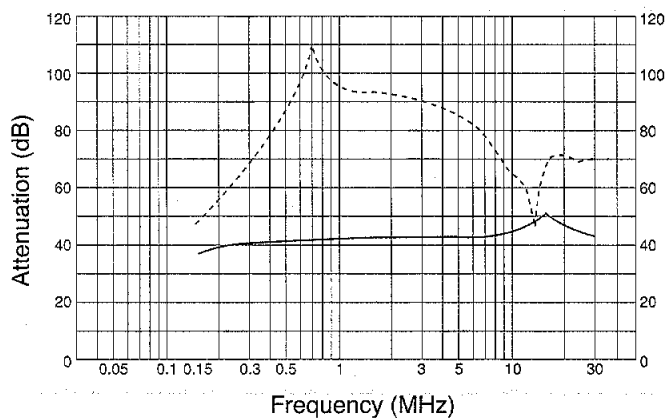
Case: Metal

(Unit: mm)

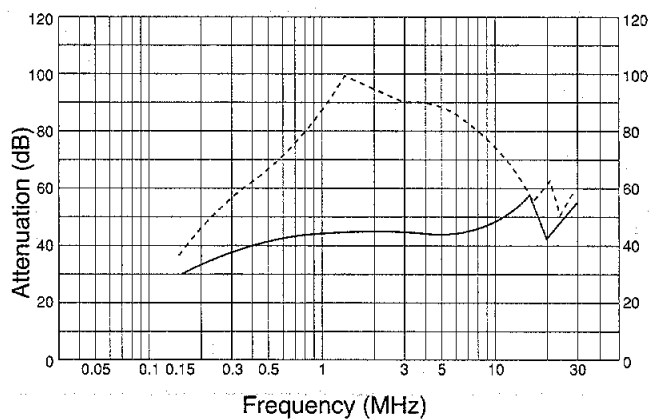
CHARACTERISTICS

■ Typical Insertion Loss Symmetrical
 - - - - - Asymmetrical

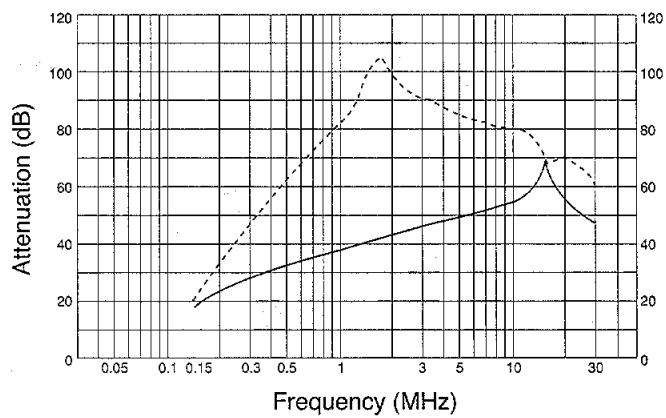
MAS-1206



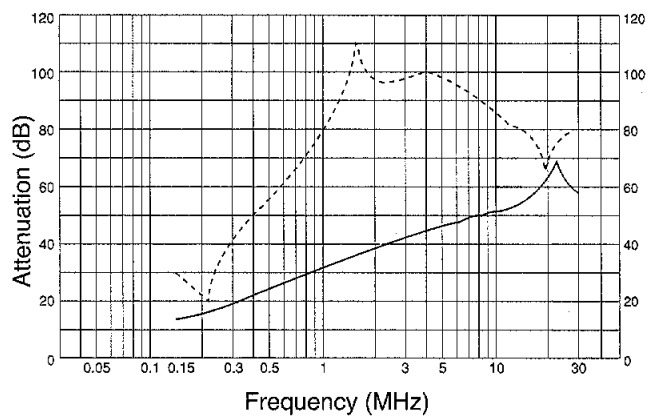
MAS-1210



MAS-1215



MAS-1220



Noise Filter