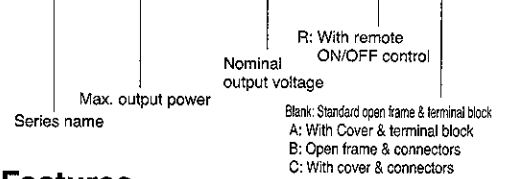


CE marked for Low Voltage Directive

Model name

JWT75 - 522 /



Features

- CE marking
- Meet to Low Voltage Directive: Approved by EN60950
- Machinery Directive (Approved by VDE0160)
- Power Factor & Harmonic Correction (Built to meet EN61000-3-2)
- Universal Input (85 ~ 265VAC)
- EMI (Built to meet EN55011-B, EN55022-B, VCCI-B, FCC-B)
- Remote ON/OFF control (Optional model)

Specifications

| | |
|-----------------------------|---|
| 1. Input voltage range | 85 ~ 265VAC (47 ~ 63Hz) Universal input |
| 2. Power Factor | 0.99 (typ) at 100VAC Full load, 0.93 (typ) at 200VAC Full load |
| 3. Cooling | Convection cooling |
| 4. Operating Temperature | Open frame type: -10 ~ +65°C (-10 ~ +50°C: 100%, +65°C: 50%) JWT75 with cover type: -10 ~ +55°C (-10 ~ +45°C: 100%, +55°C: 60%) JWT100 with cover type: -10 ~ +50°C (-10 ~ +40°C: 100%, +50°C: 60%) |
| 5. Withstand voltage | Input to output: 3kVAC (20mA) for 1 min., Input to FG: 2kVAC (20mA) for 1 min. Output to FG: 500VAC (100mA) for 1 min. |
| 6. Conducted emission noise | Built to meet EN55011-B, EN55022-B, FCC class B, VCC I class B |
| 7. Radiated emission noise | Built to meet EN55011-B, EN55022-B, FCC class B, VCC I class B |
| 8. PFHC | Built to meet EN61000-3-2 |
| 9. Safety standard | Approved to UL1950 , CSA950(C-UL) , EN60950 (TUV) and VDE0160(TUV) |
| 10. Functions | OVP (V1 only), OCP |
| 11. Option | Remote ON/OFF control, Cover, Input & output connector terminals |

Line-up

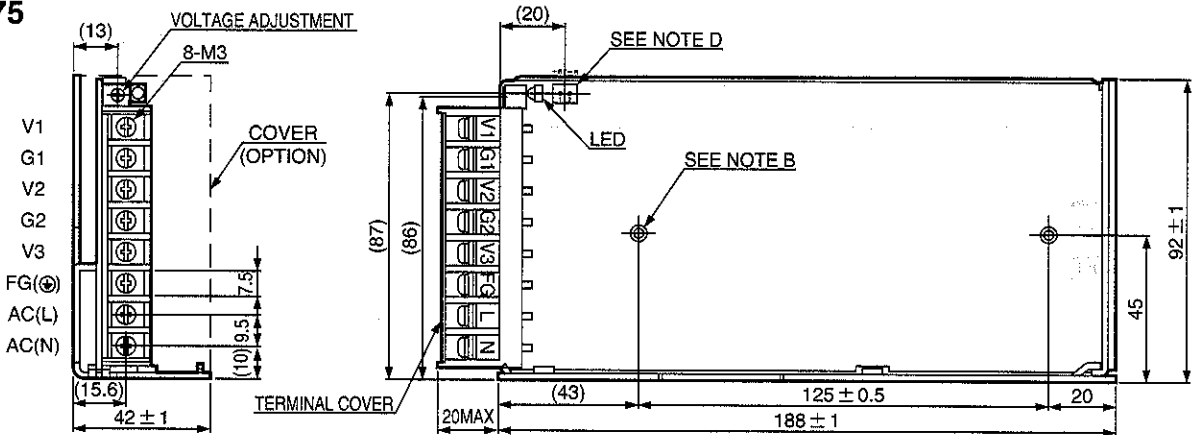
| Model | Output Channel | Output Voltage | Output Current | Output Power/ch | Total output Power | Safety Standard | | | |
|--------|----------------|----------------|----------------|-----------------|--------------------|-----------------|--------|--------|---|
| | | | | | | EN60950 | UL1950 | CSA950 | |
| JWT75 | JWT75-522 | CH1(V1) | 5V | 0.8 ~ 8.0A | 40W | 75W | ○ | ○ | ○ |
| | | CH2(V2) | +12V | 0 ~ 4.0A | 48W | | | | |
| | | CH3(V3) | -12V | 0 ~ 0.5A | 6W | | | | |
| | JWT75-5FF | CH1(V1) | 5V | 0.8 ~ 8.0A | 40W | 75W | ○ | ○ | ○ |
| | | CH2(V2) | +15V | 0 ~ 3.2A | 48W | | | | |
| | | CH3(V3) | -15V | 0 ~ 0.5A | 7.5W | | | | |
| | JWT75-525 | CH1(V1) | 5V | 0.8 ~ 8.0A | 40W | 75W | ○ | ○ | ○ |
| | | CH2(V2) | +12V | 0 ~ 4.0A | 48W | | | | |
| | | CH3(V3) | -5V | 0 ~ 0.5A | 2.5W | | | | |
| JWT100 | JWT100-522 | CH1(V1) | 5V | 1.3 ~ 13.0A | 65W | 100W | ○ | ○ | ○ |
| | | CH2(V2) | +12V | 0 ~ 5.5A | 66W | | | | |
| | | CH3(V3) | -12V | 0 ~ 1.0A | 12W | | | | |
| | JWT100-5FF | CH1(V1) | 5V | 1.3 ~ 13.0A | 65W | 100W | ○ | ○ | ○ |
| | | CH2(V2) | +15V | 0 ~ 4.5A | 67.5W | | | | |
| | | CH3(V3) | -15V | 0 ~ 1.0A | 15W | | | | |
| | JWT100-525 | CH1(V1) | 5V | 1.3 ~ 13.0A | 65W | 100W | ○ | ○ | ○ |
| | | CH2(V2) | +12V | 0 ~ 5.5A | 66W | | | | |
| | | CH3(V3) | -5V | 0 ~ 1.0A | 5W | | | | |

*Preload required 0.8A(ch1) on JWT75, 1.3A(ch1) on JWT100.

○ : Safety standard approved

Outline drawing

JWT75

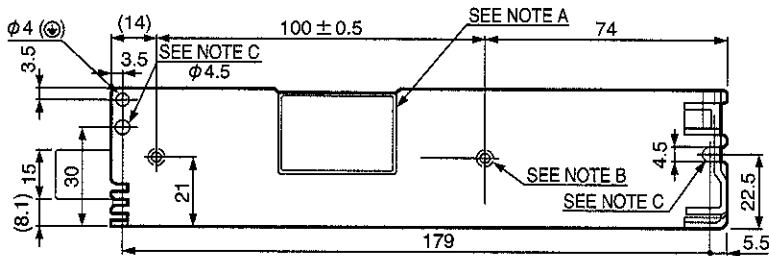


NOTES

- A: MODEL NAME, OPTION, INPUT VOLTAGE RANGE, NOMINAL OUTPUT VOLTAGE, MAXIMUM OUTPUT CURRENT AND COUNTRY OF MANUFACTURE ARE SHOWN HERE IN ACCORDANCE WITH THE SPECIFICATIONS.
 B: M4 EMBOSSED, TAPPED AND COUNTERSUNK HOLES (4) FOR CUSTOMER CHASSIS MOUNTING. SCREWS MUST NOT PROTRUDE INTO POWER SUPPLY BY MORE THAN 6mm.
 C: $\phi 4.5$ HOLE FOR CUSTOMER CHASSIS MOUNTING. (USE M4 MOUNTING SCREW.)
 D: REMOTE ON/OFF CONTROL CONNECTOR --- OPTION B2B-XH-AM (JST)

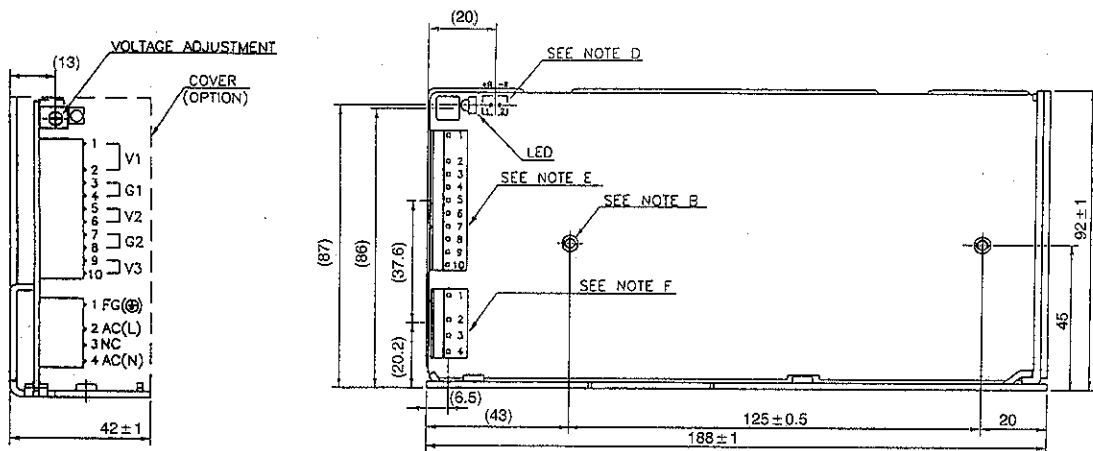
ACCESSORIES

- COVER FOR BARRIER STRIP TERMINAL
- HOUSING: XHP-2 (JST), TERMINAL: BXH-001T-P0.6 (JST) OR SXH-001T-P0.6 (JST) --- OPTION



(Unit: mm)

JWT75 (Connector terminal type)



NOTES

- A: MODEL NAME, OPTION, INPUT VOLTAGE RANGE, NOMINAL OUTPUT VOLTAGE, MAXIMUM OUTPUT CURRENT AND COUNTRY OF MANUFACTURE ARE SHOWN HERE IN ACCORDANCE WITH THE SPECIFICATIONS.
 B: M4 EMBOSSED, TAPPED AND COUNTERSUNK HOLES (4) FOR CUSTOMER CHASSIS MOUNTING. SCREWS MUST NOT PROTRUDE INTO POWER SUPPLY BY MORE THAN 6mm.
 C: $\phi 4.5$ HOLE FOR CUSTOMER CHASSIS MOUNTING. (USE M4 MOUNTING SCREW.)
 D: REMOTE ON/OFF CONTROL CONNECTOR --- OPTION B2B-XH-AM (JST)
 E: CONNECTOR: 5277-10A (MOLEX)
 F: CONNECTOR: 5289-4A (MOLEX)

ACCESSORIES

- HOUSING: S196-10 (MOLEX), TERMINAL: S194PBT (MOLEX)
- HOUSING: S199-04 (MOLEX), TERMINAL: S194PBT (MOLEX)
- HOUSING: XHP-2 (JST), TERMINAL: BXH-001T-P0.6 (JST) OR SXH-001T-P0.6 (JST) --- OPTION

Recommended Noise Filter

MAW-1202-22



GO!!

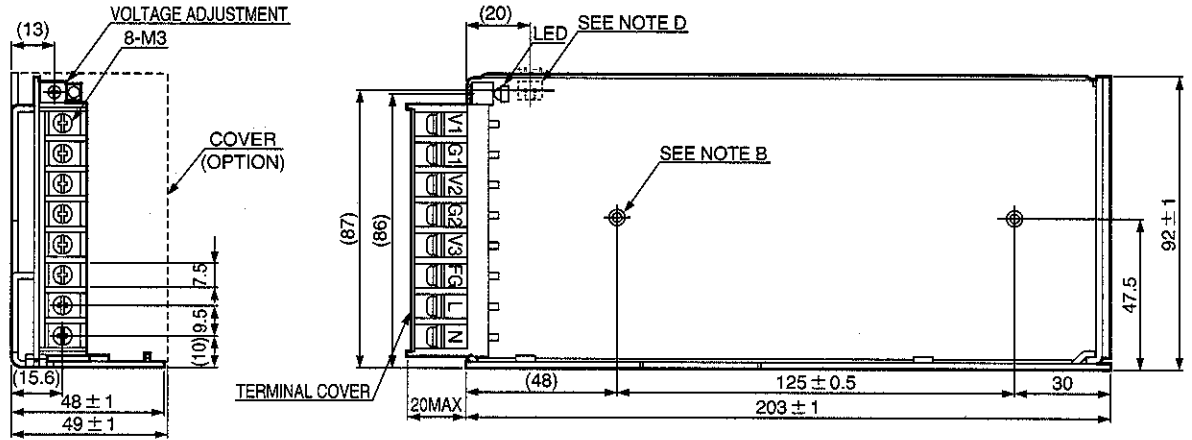
P134

Recommended Power Supply Fixture

P198

(Unit: mm)

JWT100

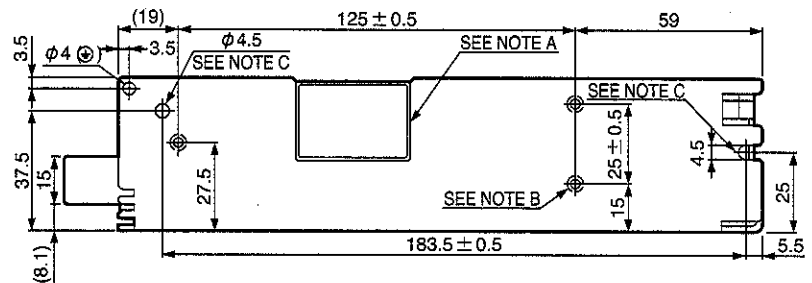


NOTES

- A: MODEL NAME, OPTION, INPUT VOLTAGE RANGE, NOMINAL OUTPUT VOLTAGE, MAXIMUM OUTPUT CURRENT AND COUNTRY OF MANUFACTURE ARE SHOWN HERE IN ACCORDANCE WITH THE SPECIFICATIONS.
- B: M4 EMBOSSED, TAPPED AND COUNTERSUNK HOLES (5) FOR CUSTOMER CHASSIS MOUNTING. SCREWS MUST NOT PROTRUDE INTO POWER SUPPLY BY MORE THAN 6mm.
- C: Ø4.5 HOLE FOR CUSTOMER CHASSIS MOUNTING. (USE M4 MOUNTING SCREW.)
- D: REMOTE ON/OFF CONTROL CONNECTOR --- OPTION B2B-XH-A (JST)

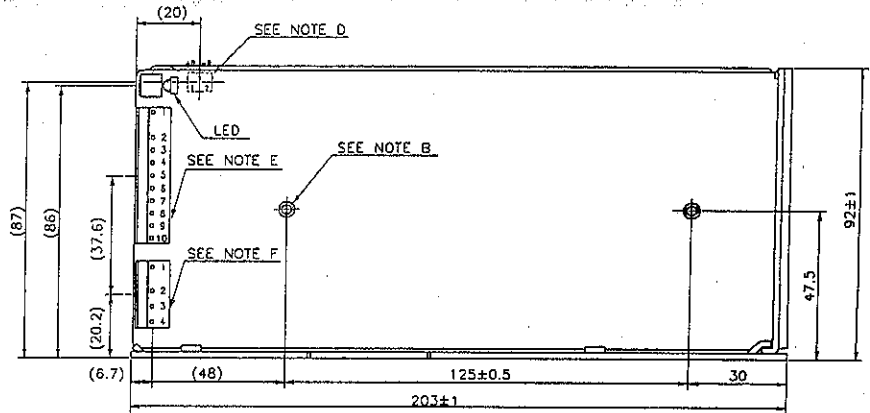
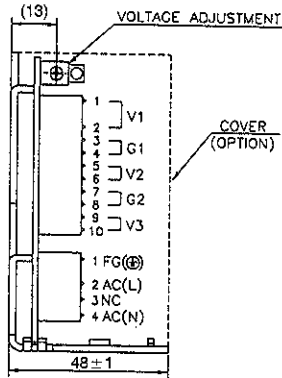
ACCESSORIES

- COVER FOR BARRIER STRIP TERMINAL
- HOUSING: XHP-2 (JST), TERMINAL: BXH-001T-P0.6 (JST) OR SXH-001T-P0.6 (JST) --- OPTION



(Unit: mm)

JWT100 (Connector terminal type)

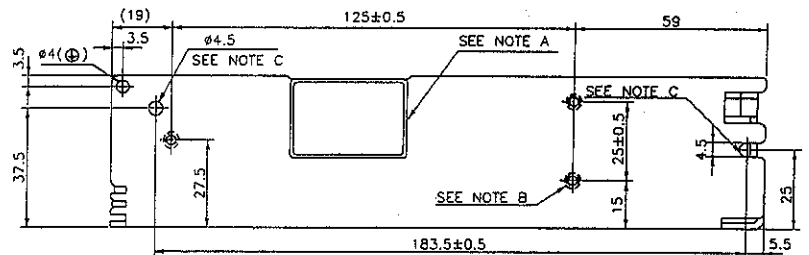


NOTES

- A: MODEL NAME, OPTION, INPUT VOLTAGE RANGE, NOMINAL OUTPUT VOLTAGE, MAXIMUM OUTPUT CURRENT AND COUNTRY OF MANUFACTURE ARE SHOWN HERE IN ACCORDANCE WITH THE SPECIFICATIONS.
- B: M4 EMBOSSED, TAPPED AND COUNTERSUNK HOLES (5) FOR CUSTOMER CHASSIS MOUNTING. SCREWS MUST NOT PROTRUDE INTO POWER SUPPLY BY MORE THAN 6mm.
- C: Ø4.5 HOLE FOR CUSTOMER CHASSIS MOUNTING. (USE M4 MOUNTING SCREW.)
- D: REMOTE ON/OFF CONTROL CONNECTOR --- OPTION B2B-XH-AM (JST)
- E: CONNECTOR: 5277-10A (MOLEX)
- F: CONNECTOR: 5289-4A (MOLEX)

ACCESSORIES

- HOUSING: 5196-10 (MOLEX), TERMINAL: 5194PBT (MOLEX)
- HOUSING: 5199-04 (MOLEX), TERMINAL: 5194PBT (MOLEX)
- HOUSING: XHP-2 (JST), TERMINAL: BXH-001T-P0.6 (JST) OR SXH-001T-P0.6 (JST) --- OPTION



(Unit: mm)

● Recommended Noise Filter
MAW-1202-22



P134

● Recommended Power Supply Fixture **P198**