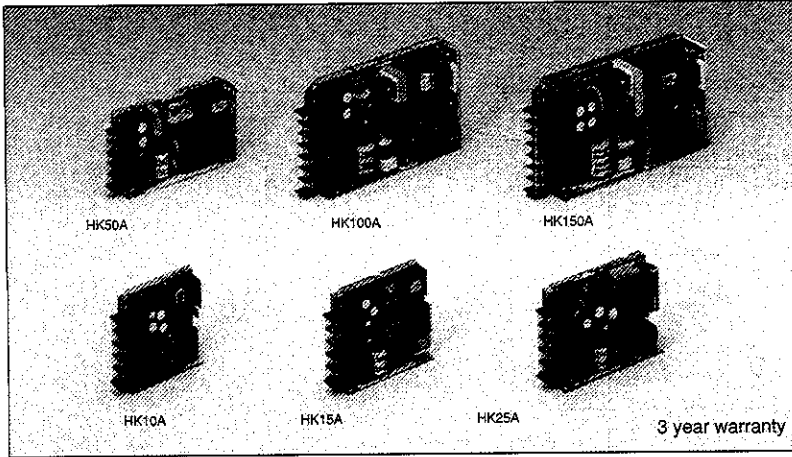


# HK-A-SERIES

Single output 10W ~ 150W

**LAMBDA**  
DENSEI-LAMBDA

Unit Type Power Supply



## Model name HK 10A-5

Nominal output voltage  
Name of series Output power  
10A: 10W type      50A: 50W type  
15A: 15W type      100A: 100W type  
25A: 25W type      150A: 150W type

## Features

- Compact size/Standard power supply  
Input: 85 ~ 132VAC  
Height: 68mm (10 ~ 50W type)
- 30 models  
3.3V output type is also lined up.
- Option: Cover
- 3 year warranty

## Specifications

1. Input voltage range	85 ~ 132VAC (47 ~ 440Hz), DC110 ~ 175V
2. Output voltage range	±10%
3. Cooling	Convection Cooling
4. Operating ambient temperature (Standard mounting)	HK10A, 15A, 25A, 50A: 100% at 0 ~ +50°C, 50% at +60°C HK100A, 150A: 100% at -10 ~ +50°C, 50% at +60°C
5. Withstand voltage	Input-output: 2kVAC, Output-chassis: 2kVAC, Output-chassis: 500VAC for 1 min.
6. Safety standard	Approved by UL1950  and CSA234.
7. EMI	Conforms to FCC class B and VCCI-class 2
8. Functions	Over voltage protection, Over current protection, Remote sensing (HK100A, 150A)

## Product lineup

Model name		Nominal output voltage	Max. output current	Max. output power	UL	CSA	EN
HK10A	HK10A-3	3.3V	2.0A	6.6W	○	△	×
	HK10A-5	5V	2.0A	10.0W	○	○	×
	HK10A-12	12V	0.9A	10.8W	○	○	×
	HK10A-15	15V	0.7A	10.5W	○	○	×
	HK10A-24	24V	0.5A	12.0W	○	○	×
HK15A	HK15A-3	3.3V	3.0A	9.9W	○	△	×
	HK15A-5	5V	3.0A	15.0W	○	○	×
	HK15A-12	12V	1.3A	15.6W	○	○	×
	HK15A-15	15V	1.0A	15.0W	○	○	×
	HK15A-24	24V	0.7A	16.8W	○	○	×
HK25A	HK25A-3	3.3V	5.0A	16.5W	○	△	×
	HK25A-5	5V	5.0A	25.0W	○	○	×
	HK25A-12	12V	2.1A	25.2W	○	○	×
	HK25A-15	15V	1.7A	25.5W	○	○	×
	HK25A-24	24V	1.1A	26.4W	○	○	×

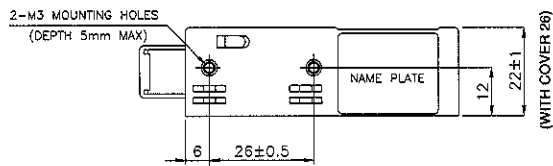
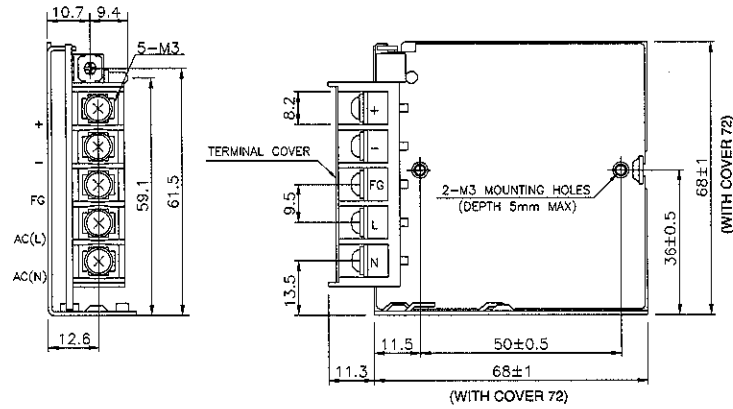
- Request customer specification for further details of specifications, outline, characteristics, etc. Read the instruction manual before usage.
- Contact us about delivery before ordering.

Model name		Nominal output voltage	Max. output current	Max. output power	UL	CSA	EN
HK50A	HK50A-3	3.3V	10.0A	33.0W	○	△	×
	HK50A-5	5V	10.0A	50.0W	○	○	×
	HK50A-12	12V	4.2A	50.4W	○	○	×
	HK50A-15	15V	3.4A	51.0W	○	○	×
	HK50A-24	24V	2.2A	52.8W	○	○	×
HK100A	HK100A-3	3.3V	20.0A	66W	○	○	×
	HK100A-5	5V	20.0A	100W	○	○	×
	HK100A-12	12V	8.5A	102W	○	○	×
	HK100A-15	15V	7.0A	105W	○	○	×
	HK100A-24	24V	4.5A	108W	○	○	×
HK150A	HK150A-3	3.3V	30.0A	99W	○	○	×
	HK150A-5	5V	30.0A	150W	○	○	×
	HK150A-12	12V	12.5A	150W	○	○	×
	HK150A-15	15V	10.0A	150W	○	○	×
	HK150A-24	24V	6.5A	156W	○	○	×

○ : Safety standard approved  
△ : Conforms to safety standard

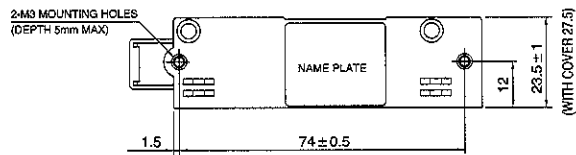
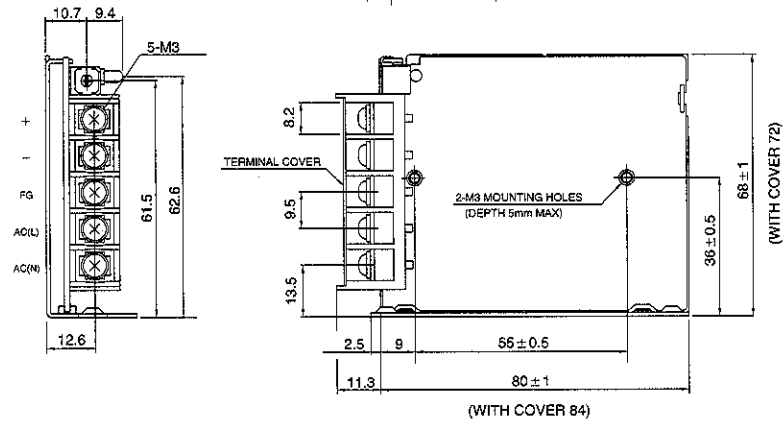
# HK-A-SERIES

## HK10A



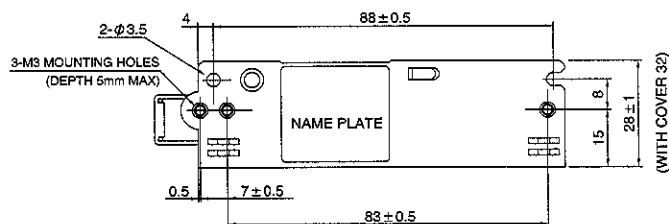
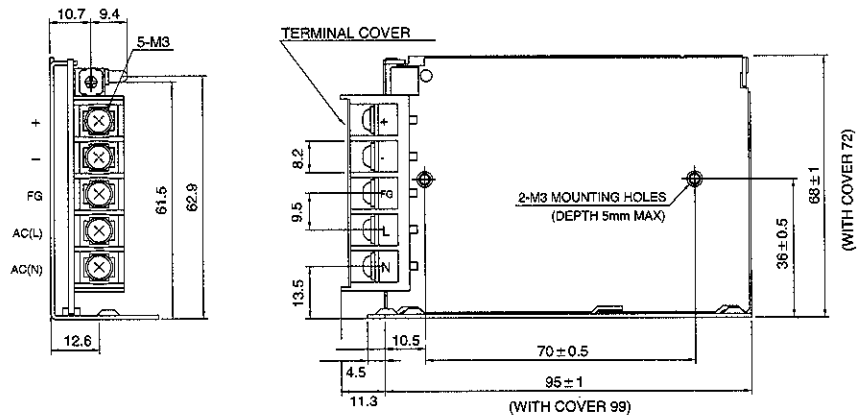
(Unit: mm)

## HK15A



(Unit: mm)

## HK25A

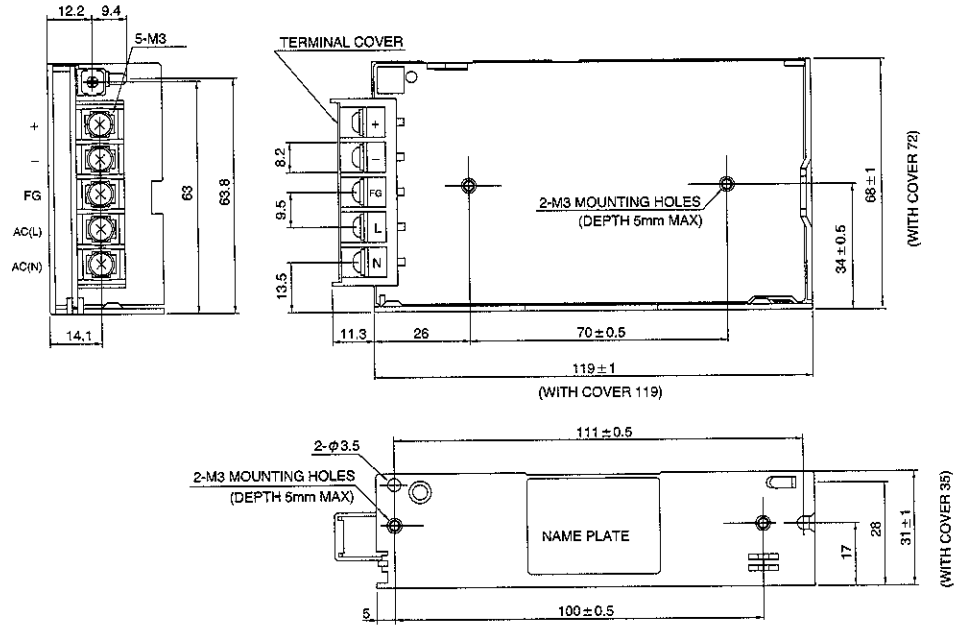


(Unit: mm)

# HK-A-SERIES

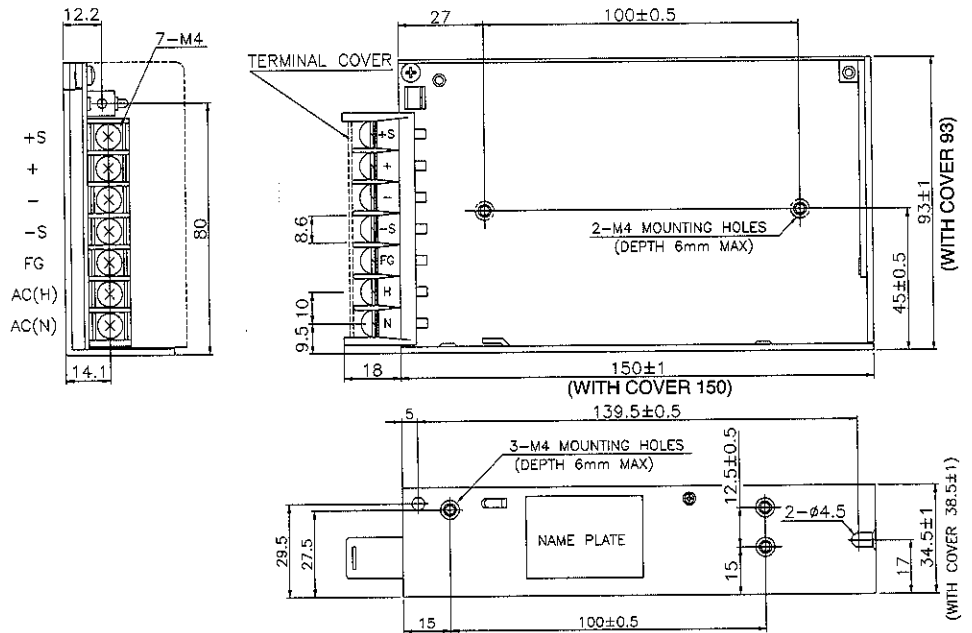
Unit Type Power Supply

## ■ HK50A



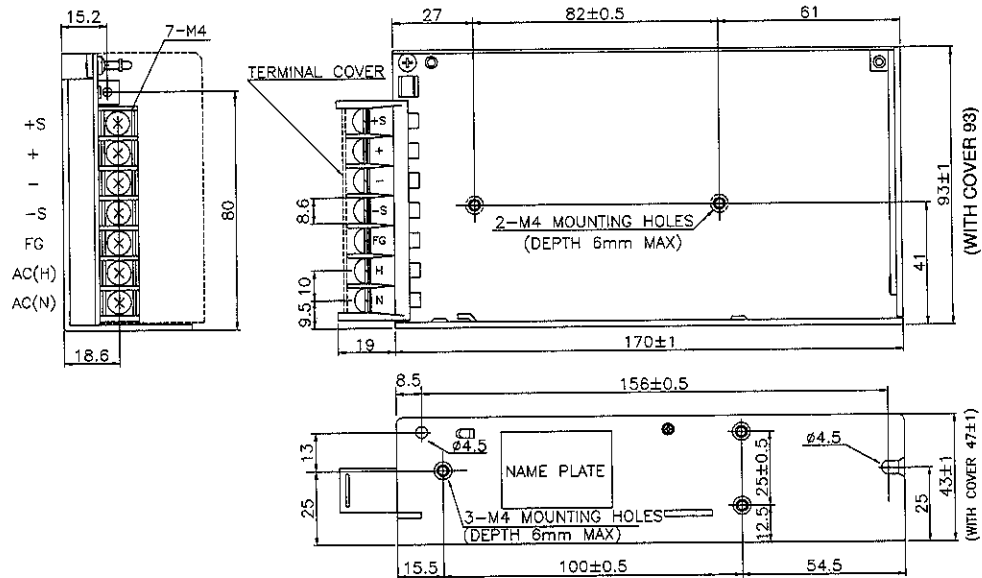
(Unit: mm)

## ■ HK100A



(Unit: mm)

## ■ HK150A



(Unit: mm)