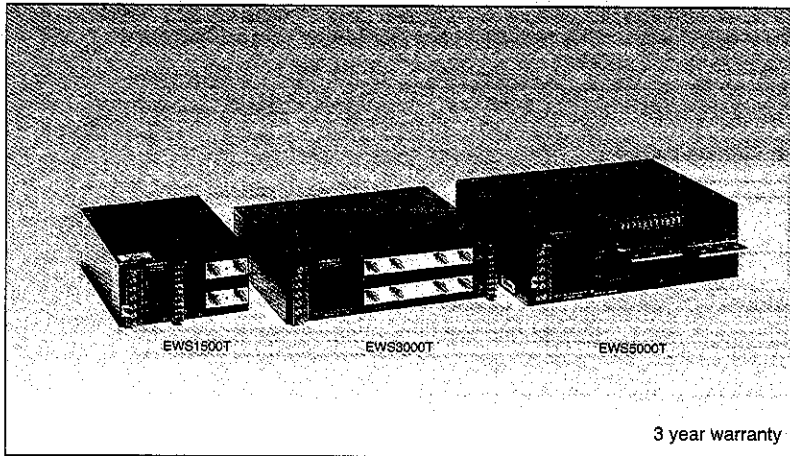


EWS-T-SERIES

Single output 1500W ~ 5000W

LAMBDA
DENSEI-LAMBDA



Model name

EWS 1500T-5

Name of series Output power Nominal output voltage

Features

- Compact size/3 phase-3 wire/High power
Input: 3φ200V, Power factor: 0.95
- Output voltage programmable:
0V to nominal output voltage by external control.
Voltage adjustable range: ±20%
- Load current sharing
- Open phase detector
- 3 year warranty

3 year warranty

Specifications

1. Input voltage range	3 phases-3 wire 170 ~ 265VAC (47 ~ 63 Hz)
2. Power factor	0.95 (typ) 200VAC at full load
3. Output voltage range	±20% (2V, 3.3V: -10 ~ +20%), 0V to nominal output voltage x 120% by external control
4. Cooling	Forced air cooling by internal fan
5. Operating ambient temperature	-10 ~ +60°C (Standard mounting) Output derating: 70% at -10°C, 100% at 0 ~ +50°C, 70% at +60°C
6. Withstand voltage	Input-output: 2.5kVAC, Output-chassis: 2.5kVAC, Output-chassis: 500VAC for 1 min.
7. Safety standard	Conforms to UL and CSA
8. Functions	Over voltage protection, Over current protection, Thermal protection, Remote sensing Remote on/off control, Power failure signal, Output current balancing

Product lineup

Model name	Nominal output voltage	Max. output current	Max. DC output power	UL	CSA	
EWS1500T	EWS1500T-2	2V	300A	600W	△	△
	EWS1500T-3.3	3.3V	300A	990W	△	△
	EWS1500T-5	5V	300A	1500W	△	△
	EWS1500T-10	10V	150A	1500W	△	△
	EWS1500T-12	12V	125A	1500W	△	△
	EWS1500T-15	15V	100A	1500W	△	△
	EWS1500T-24	24V	63A	1512W	△	△
	EWS1500T-36	36V	42A	1512W	△	△
EWS3000T	EWS3000T-2	2V	600A	1200W	△	△
	EWS3000T-3.3	3.3V	600A	1980W	△	△
	EWS3000T-5	5V	600A	3000W	△	△
	EWS3000T-10	10V	300A	3000W	△	△
	EWS3000T-12	12V	250A	3000W	△	△
	EWS3000T-15	15V	200A	3000W	△	△
	EWS3000T-24	24V	125A	3000W	△	△
	EWS3000T-36	36V	84A	3024W	△	△
EWS5000T	EWS5000T-2	2V	1000A	2000W	△	△
	EWS5000T-3.3	3.3V	1000A	3300W	△	△
	EWS5000T-5	5V	1000A	5000W	△	△

- Request customer specification for further details of specifications, outline, characteristics, etc.
Read the instruction manual before usage.
- Contact us about delivery before ordering.

○ : Safety standard approved
△ : Conforms to safety standard

Unit Type Power Supply

EWS-T-SERIES

LAMBDA
DENSEI-LAMBDA

Unit Type Power Supply

EWS1500T

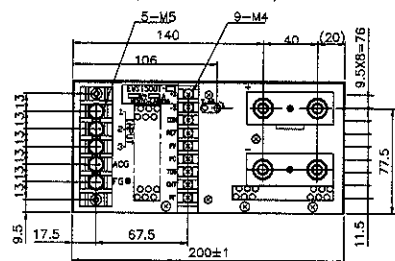
● Recommended Noise Filter

MB1310

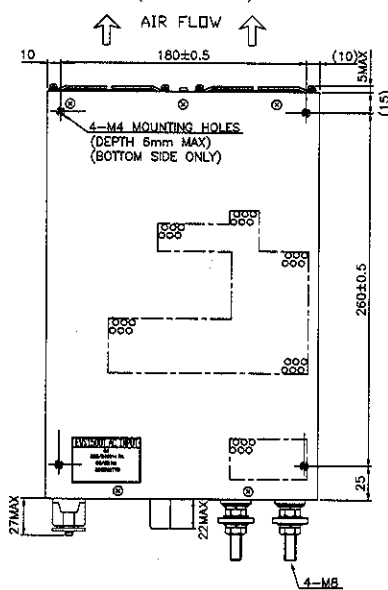


GO!!
P141

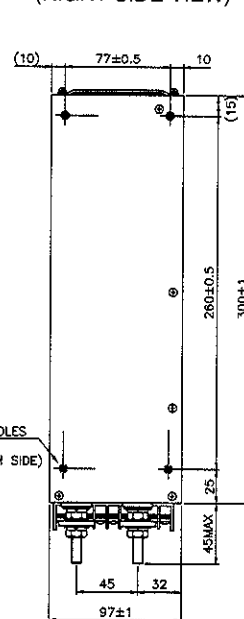
(FRONT VIEW)



(TOP VIEW)



(RIGHT SIDE VIEW)



EWS3000T

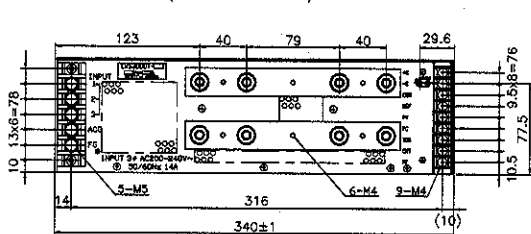
● Recommended Noise Filter

MB1320

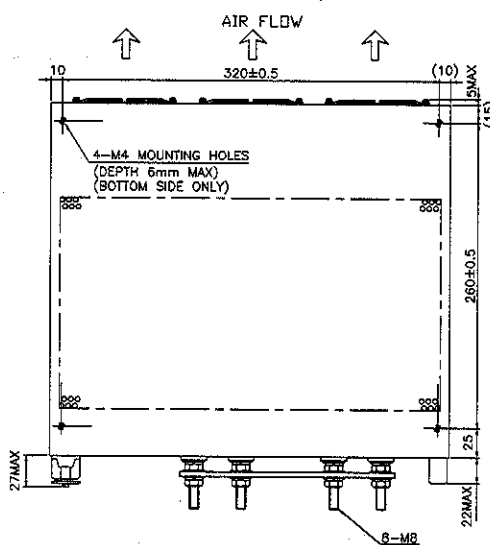


GO!!
P141

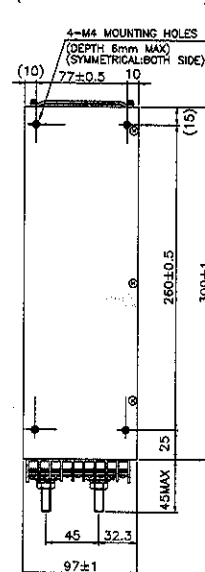
(FRONT VIEW)



(TOP VIEW)



(RIGHT SIDE VIEW)



EWS5000T

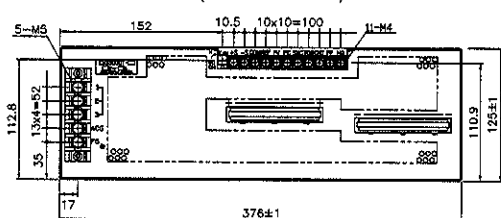
● Recommended Noise Filter

MB1330

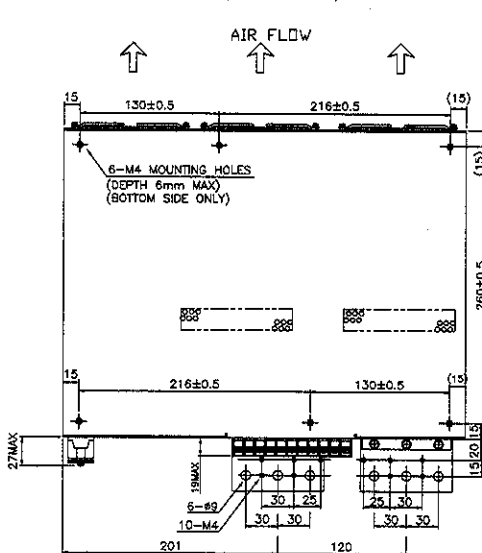


GO!!
P141

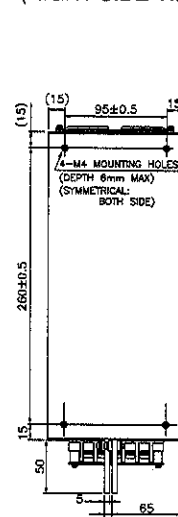
(FRONT VIEW)



(TOP VIEW)



(RIGHT SIDE VIEW)



(Unit: mm)