

**15-1500**

**WATTS**

**POWER SUPPLY AC/DC**

**SINGLE OUTPUT**

**Universal input 85-265VAC**

**Wide range output adjustment**

**Current sharing on 300 watt models and above**

**Remote programming on EWS 1500**

**Optional DIN rail mounting**

**Guarantee 3 years**

**INPUT**

Input voltage range	85-265VAC wide range on EWS 15, 25, 50 85-132V / 170-265VAC auto select on EWS 100, 150, 300, 600 85-132V / 170-265VAC selectable EWS 1500
Frequency	47-440Hz (47-63Hz on EWS 1500)
Inrush current	28A on EWS 15, 100, 150 9A on EWS 25 13.5A on EWS 50 50A on EWS 300 60A on EWS 600, 1500 to 200VAC
Input protection	fuse
Input voltage range	110-330VDC on EWS 15, 25, 50 230-330VDC on EWS 100, 150

**OUTPUT**

Power (convection cooled)	15 to 180W (EWS 15, 25, 50, 100, 150)
(Integral fan)	300 to 1500W (EWS 300, 600, 1500)
Adjustment voltage range	± 10% on EWS 15, 25, 50, of 100, 150 ±20% on EWS 300, 600 0% to 120% on EWS 1500 via signal 0 - 6V
Line regulation (on specific ranges)	0.4% (0.6% for 3.3V EWS 1500, 1% for 2V EWS 1500)
Load regulation (0 to 100% loading)	0.6% on EWS 300, 600 and 5V - 48V EWS 1500 0.8% on EWS 15, 25, 50, 100, 150 0.9% on 3.3V EWS 1500 1.5% on 2V EWS 1500
Hold up	16mSec on EWS 15, 25, 50 20mSec on EWS 100, 150, 300, 600, 1500 200VAC full charge
Ripple and noise	EWS 15, 25, 50 : 100mV EWS 100, 150 : 5V - 9V 150mV 12V - 15V 200mV 18V - 48V 250mV EWS 300, 600, 1500 : 2V - 5V 100mV 6V - 28V 200mV 48V 400mV

## OUTPUT

Temperature coefficient	≤ 2% on EWS 1500 ≤ 1% on the other models
Over current protection	current limit
Over voltage protection	standard on all models
Remote control	standard on EWS 100 and above

## GENERAL

Efficiency (type)	60 to 84% model dependent
MTBF	Check with Technical Sales
Voltage isolation :	
Input-output	> 3750VAC (20mA) 1min
Input-ground	> 2500VAC (20mA) 1min
Output-ground	> 500VAC (100mA) 1min
Isolation resistance	more than 100MΩ @ 25°C and 70% RH output to chassis 500VAC
Remote control	via external logic signal (EWS 300, 600 and 1500)
Power fail	open collector (EWS 300, 600 and 1500)
Parallel operation	possible on EWS 300, 600 and 1500 with current share

## ENVIRONMENTAL

Operating temp. range	0°C to +60°C. Recovery to -10°C
Derating (type)	60% to -10°C (EWS 100, 150) 70% to -10°C (other models) 100% to 40°C (EWS 100, 150) 100% to 50°C (other models) 85% to 50°C (EWS 100, 150) 40% to 60°C (EWS 100, 150) 50% to 60°C (EWS 15, 25, 50) 70% to 60°C (EWS 300, 600 and 1500)
Storage temperature	-30°C to +85°C
Operating humidity (non condensing)	30% to 90% RH
Operating humidity (non condensing)	10% to 95% RH
Shock	20G
Vibration	2G
EMI	meets FCC 20780A and VDE 0871A on EWS 100 and 150

## TABLE OF MODELS

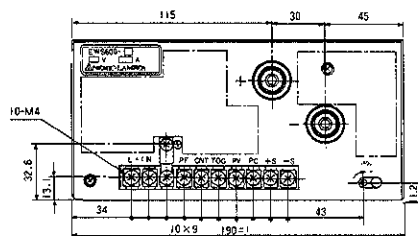
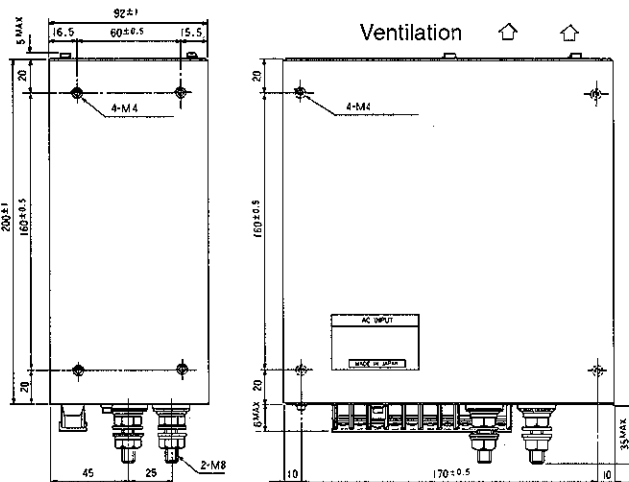
Model	Case	Max Power Watts	Output Volts	Amp.	Model	Case	Max Power Watts	Output Volts	Amp.
EWS 300 2	300	120	2	60	EWS 15 12	15	17	12	1.4
EWS 600 2	600	240		120	EWS 25 12	25	26		2.2
EWS 1500 2	1500	600		300	EWS 50 12	50	53		4.4
EWS 1500 3.3	1500	990	3.3	300	EWS 100 12	100	120	12	10
EWS 15 5	15	15	5	3	EWS 150 12	150	180		15
EWS 25 5	25	25		5	EWS 300 12	300	324		27
EWS 50 5	50	50		10	EWS 600 12	600	636		53
EWS 100 5	100	120		24	EWS 1500 12	1500	1500		125
EWS 150 5	150	180		36	EWS 15 15	15	17	15	1.2
EWS 300 5	300	300		60	EWS 25 15	25	27		1.8
EWS 600 5	600	600		120	EWS 50 15	50	54		3.6
EWS 1500 5	1500	1500		300	EWS 100 15	100	120		8
EWS 15 6	15	15	6	2.5	EWS 150 15	150	180		12
EWS 25 6	25	25		4.2	EWS 300 15	300	330		22
EWS 50 6	50	50		8.4	EWS 600 15	600	645		43
EWS 100 6	100	120		20	EWS 1500 15	1500	1500		100
EWS 150 6	150	180		30	EWS 15 18	15	16	18	0.9
EWS 300 6	300	300		50	EWS 25 18	25	27		1.5
EWS 600 6	600	600		100	EWS 50 18	50	58		3.2
EWS 15 9	15	15	9	1.7	EWS 100 18	100	121		6.7
EWS 25 9	25	25		2.8	EWS 150 18	150	180		10
EWS 50 9	50	50		5.6	EWS 300 18	300	324		18
EWS 100 9	100	121		13.4	EWS 600 18	600	630		35
EWS 150 9	150	180		20	EWS 15 24	15	17	24	0.7
EWS 300 9	300	306		34	EWS 25 24	25	29		1.2
EWS 600 9	600	612		68	EWS 50 24	50	58		2.4
EWS 1500 10	1500	1500	10	150	EWS 100 24	100	120		5

# Series EWS

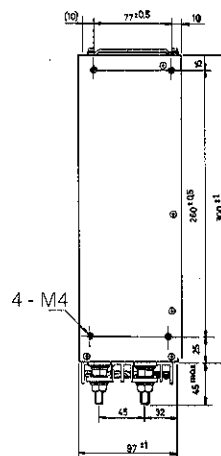
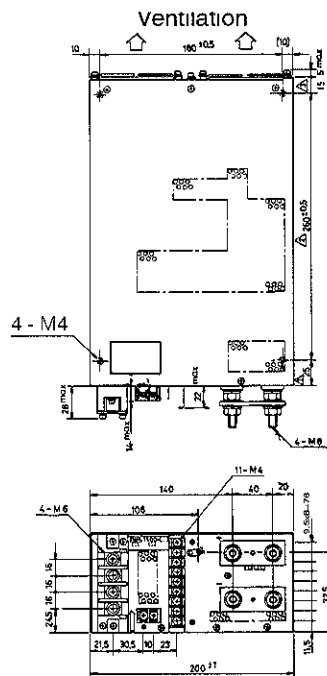
**LAMBDA**   
An Invensys company



**CASE 600**  
Weight 4Kg



**CASE 1500**  
Weight 7Kg



**CONNECTIONS**

Input connection	terminal blocks
Output connection	terminal blocks, M8 studs for DC output for EWS 600,1500

**Series EWS**

**LAMBDA**   
An Invensys company

EDITION 2001