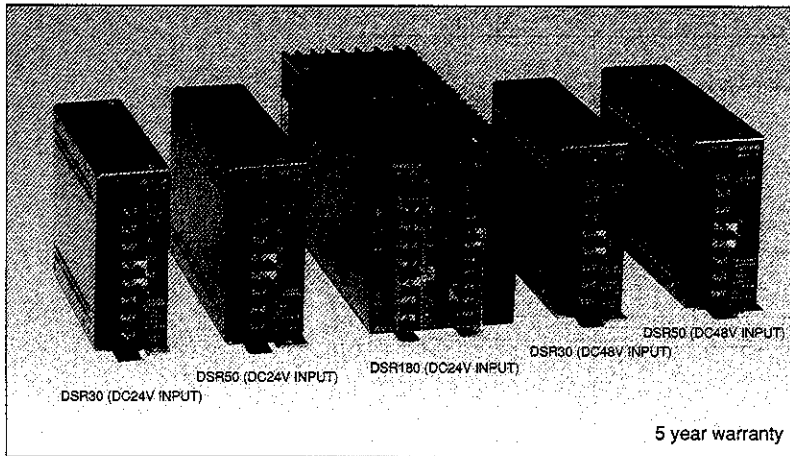


DSR-SERIES

Single output 30W ~ 180W

LAMBDA
DENSEI-LAMBDA

Unit Type Power Supply



Model name DSR 50-5-24

Name of series Output power: 30W, 50W, 180W
Output voltage: 5 ~ 48V
Input voltage: 24: 18 ~ 32VDC, 48: 32 ~ 63VDC

Features

- Long life and high reliability
Over 10 years lifetime at 40°C, full load
Vibration: 5G max.
- Wide operating temperature range: -20 ~ +71°C
- Input voltage range
DC24V input: DC18 ~ 32V, 48V input: 32 ~ 63V
- Wide variation
DC24V input: 17 models, 30/50/180W
DC48V input: 12 models, 30/50W
- 5 year warranty

Specifications

1. Input voltage range	DC 24V input: DC 18 ~ 32V DC 48V input: DC 32 ~ 63V
2. Output voltage range	-10% ~ +20%
3. Line regulation	0.4% (DC18 ~ 32V/DC32 ~ 63V, at constant load)
4. Load regulation	0.8% (No load – full load, at constant input voltage)
5. Cooling	Convection cooling
6. Operating ambient temperature (Standard mounting)	-20 ~ +71°C (+61 ~ +70°C: Forced Air Cooling) -20°C: 50%, 0 ~ +50°C: 100%, +60°C: 70%, +71°C: 50%
7. Withstand voltage	Input-output: 1.5kVAC, input-FG: 1.5kVAC, output-FG: 500VAC for 1 min. (DSR180... Input/output-FG: 2.5kVAC, output-FG: 500VAC for 1 min.)
8. Vibration	When not operating 10 ~ 55Hz, amplitude 0.825mm constant (MAX. 5G), Sweep for 1 min., X, Y and Z axes for 1 hour
9. Functions	Over voltage protection, Over current protection, Thermal protection, Remote on/off control Low input protection, Power failure (Low output voltage detection signal) DSR180: Remote sensing, Output current balancing, Switching frequency synchronization Output voltage programmable by external control

Product lineup

Model name	Nominal output voltage	Max. output current	Max. output power	UL	CSA	
DSR30	DSR30-5-24	5V	6.0A	30.0W	Δ	Δ
	DSR30-12-24	12V	2.5A	30.0W	Δ	Δ
	DSR30-15-24	15V	2.0A	30.0W	Δ	Δ
	DSR30-24-24	24V	1.3A	31.2W	Δ	Δ
	DSR30-40-24	40V	0.8A	32.0W	Δ	Δ
	DSR30-48-24	48V	0.7A	33.6W	Δ	Δ
	DSR30-5-48	5V	6.0A	30.0W	Δ	Δ
	DSR30-12-48	12V	2.5A	30.0W	Δ	Δ
	DSR30-15-48	15V	2.0A	30.0W	Δ	Δ
	DSR30-24-48	24V	1.3A	31.2W	Δ	Δ
	DSR30-40-48	40V	0.8A	32.0W	Δ	Δ
	DSR30-48-48	48V	0.7A	33.6W	Δ	Δ

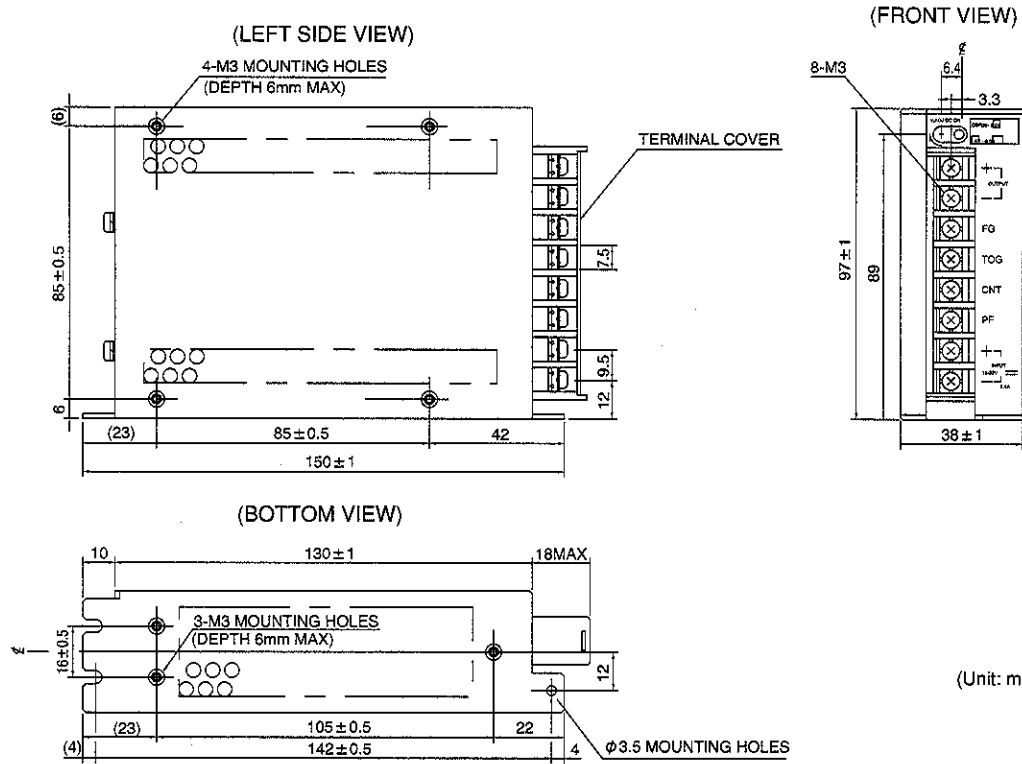
Model name	Nominal output voltage	Max. output current	Max. output power	UL	CSA	
DSR50	DSR50-5-24	5V	10.0A	50.0W	Δ	Δ
	DSR50-12-24	12V	4.3A	51.6W	Δ	Δ
	DSR50-15-24	15V	3.4A	51.0W	Δ	Δ
	DSR50-24-24	24V	2.1A	50.4W	Δ	Δ
	DSR50-40-24	40V	1.3A	52.0W	Δ	Δ
	DSR50-48-24	48V	1.1A	52.8W	Δ	Δ
	DSR50-5-48	5V	10.0A	50.0W	Δ	Δ
	DSR50-12-48	12V	4.3A	51.6W	Δ	Δ
	DSR50-15-48	15V	3.4A	51.0W	Δ	Δ
	DSR50-24-48	24V	2.1A	50.4W	Δ	Δ
	DSR50-40-48	40V	1.3A	52.0W	Δ	Δ
	DSR50-48-48	48V	1.1A	52.8W	Δ	Δ
DSR180	DSR180-5-24	5V	36A	180W	Δ	Δ
	DSR180-6-24	6V	30A	180W	Δ	Δ
	DSR180-12-14	12V	15A	180W	Δ	Δ
	DSR180-24-24	24V	7.5A	180W	Δ	Δ
DSR180-48-24	48V	3.7A	177.6W	Δ	Δ	

- Request customer specification for further details of specifications, outline, characteristics, etc. Read the instruction manual before usage.
- Contact us about delivery before ordering.

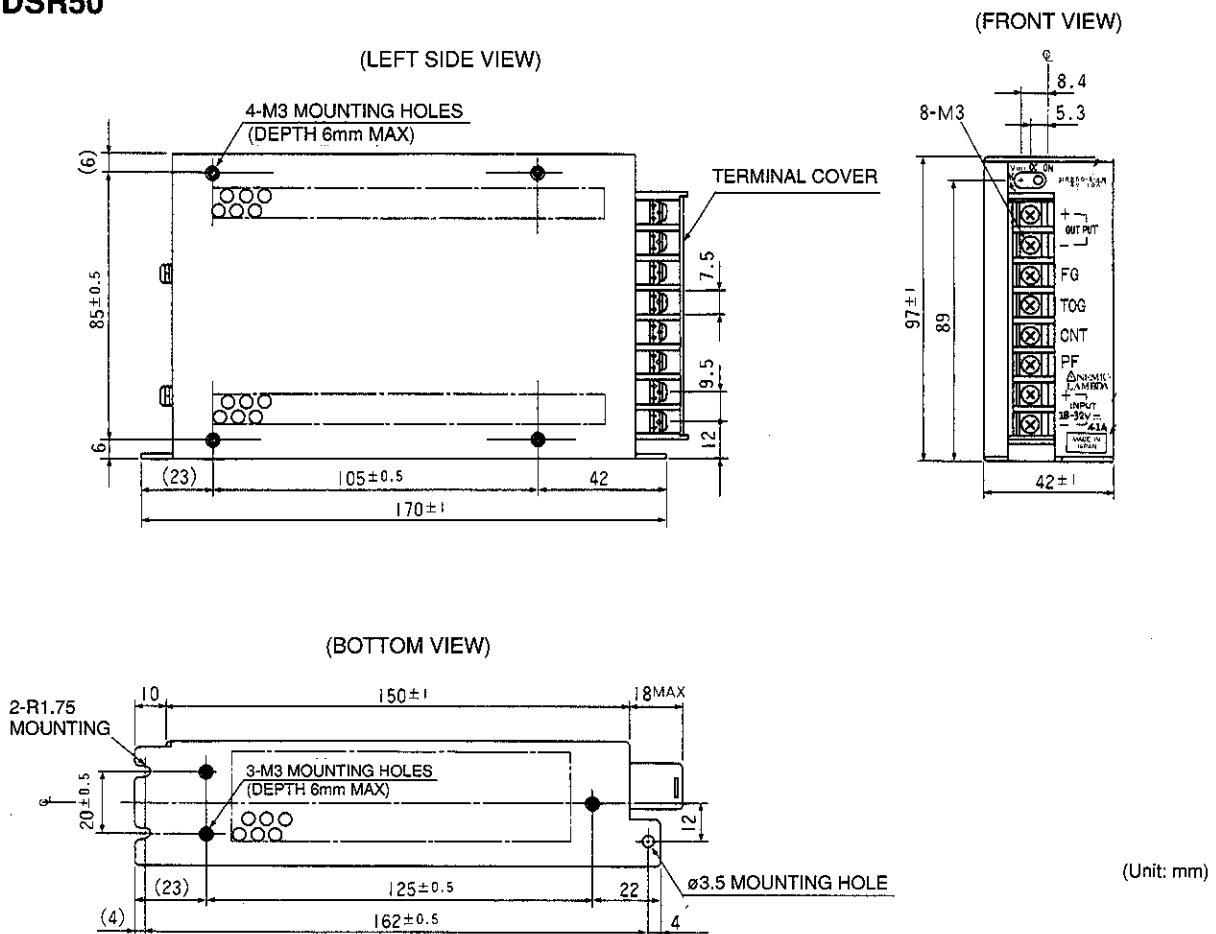
○ : Safety standard approved
Δ : Conforms to safety standard

DSR-SERIES

DSR30



DSR50

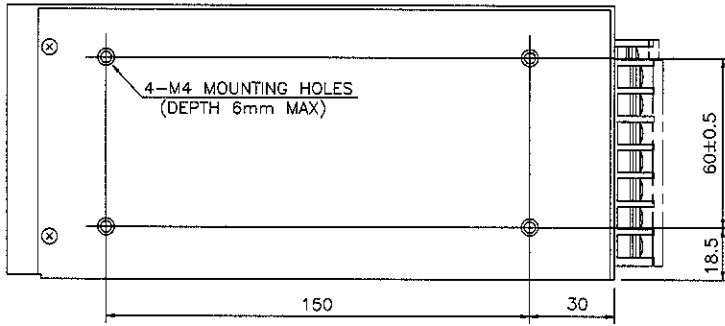


DSR-SERIES

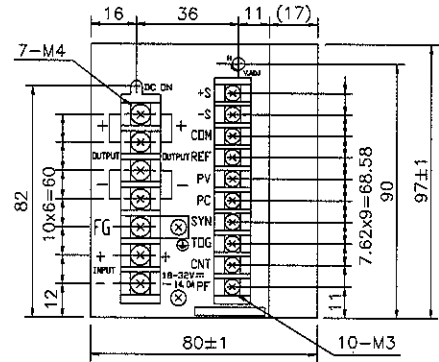
Unit Type Power Supply

DSR180

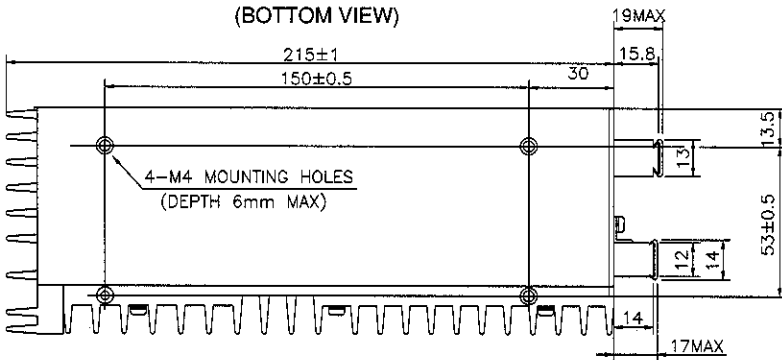
(LEFT SIDE VIEW)



(FRONT VIEW)



(BOTTOM VIEW)



(Unit: mm)