

### **Power Factor & Harmonic Correction**

### **Input Transient Protection**

### **Wide Range Output Modules**

### **Up to 7 Outputs**

### **No Minimum Load Requirements**

### **Modular Configurable Outputs**

### **Fast-on Tab Connectors For Fast Installation**

### **Worldwide Safety Agency Approvals**

When relying on customized power supplies, many companies experience the frustrations of expensive NRE costs, long time to market and design uncertainty. Lambda's Alpha Series addresses these concerns by providing custom power solutions with short lead-times, No NRE, and ordering ease of a standard product.

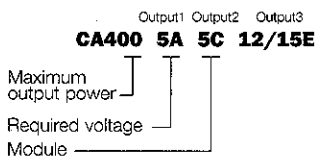
Lambda's Alpha Series is available in a 400 watt package with 13 wide range output modules available in both single and dual outputs. Ensuring global acceptance, Lambda's Alpha Series features Power Factor Correction, Universal AC Input, and International Agency Approvals.

#### **Similar products**

		<b>Page</b>
<b>UltraFlex</b>	DC Input, Greater Flexibility	92
<b>PP</b>	Lower Cost Fixed Outputs	74
<b>RP</b>	Higher Power, Smaller Size	54

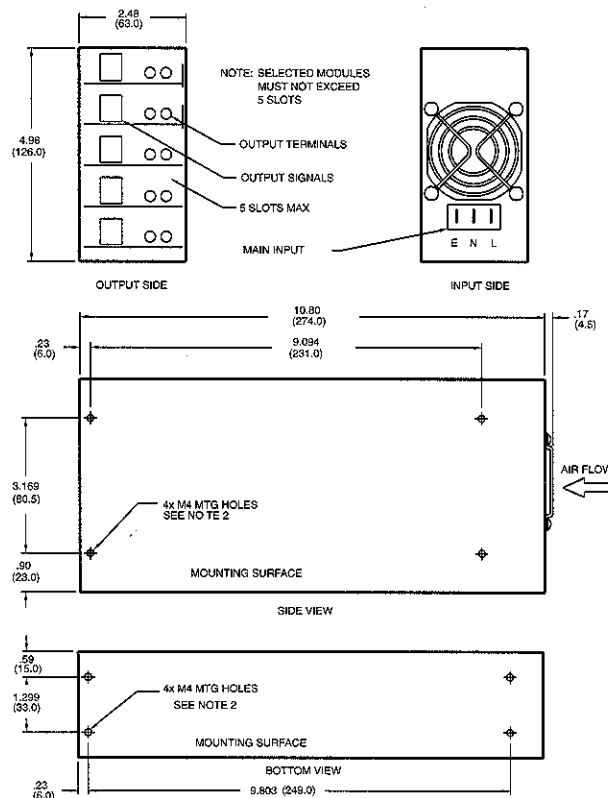
<b>AC Input</b> .....	90-255VAC, 47-63Hz.
<b>Efficiency</b> .....	75% typical, configuration and input voltage dependent.
<b>Power Factor Correction</b> ....	EN61000-3-2.
<b>Input Transient Protection</b> ..	IEC1000-4-2 (-3, -4, -5).
<b>EMI</b> .....	Conducted: EN55022-B Curve B & FCC Class B.
<b>Output Voltage Adj Range</b> ..	Multi-turn potentiometer.
<b>Line Regulation</b> .....	<0.5%.
<b>Load Regulation</b> .....	<0.5%, with remote sense.
<b>Ripple and Noise</b> .....	50 mV pk-pk for 3.3 & 5V. 150 mV pk-pk for 12-15V. 240 mV pk-pk for 18-28V.
<b>Hold-up Time</b> .....	15ms (minimum).
<b>Overcurrent Protection</b> .....	Electronic current limiting circuit limits the output current to 105%-130% of the maximum rated current with automatic recovery.
<b>Overvoltage Protection</b> .....	Non-crowbar, inverter shutdown type OV protection.
<b>Cooling</b> .....	Fan cooled.
<b>Operating Temperature Range</b>	0°C to +65°C, with derating of 2.5%/°C above +50°C.
<b>Storage Temperature</b> .....	-40°C to +85°C.
<b>Humidity</b> .....	5-95% RH (non-condensing).
<b>Isolation</b> .....	Input to Output – 3.0kVAC. Input to Chassis (FG) – 1.5kVAC. Output to Chassis (FG) – 500VDC.
<b>Remote Sensing</b> .....	All modules except dual outputs.
<b>Input and Output Connections</b>	Fast connection tabs.
<b>Safety Agency Approval</b> .....	UL1950, CSA22.2 No. 234, EN60950 and CE Mark (Low Voltage Directive).
<b>Options</b> .....	AC Fail, Global Inhibit, Module Inhibit, Module to Module Current Sharing, Parallel for Redundancy and 5V auxiliary.
<b>Warranty</b> .....	1 year.

OUTPUT	POWER (W)	MAX CURRENT AMPS AT			SLOTS	MODEL
		40°	50°	60°		
<b>Single Output</b>						
<b>3.3V</b> (2.7-3.9)	97.5	25.0	25.0	18.75	1	<b>Q Module</b>
	234	60.0	60.0	45.00	2	<b>R Module</b>
<b>5V</b> (4.5-5.5)	137.5	25.0	25.0	18.75	1	<b>B Module</b>
	330	60.0	55.0	41.25	2	<b>A Module</b>
<b>12V</b> (5.0-15.0)	120	8.0	8.0	6.00	1	<b>M Module</b>
	240	16.0	16.0	12.00	1	<b>C Module</b>
<b>12V</b> (10.0-15.0)	495	33.0	33.0	24.75	2	<b>F Module</b>
<b>24V</b> (18.0-28.0)	140	5.0	5.0	3.75	1	<b>N Module</b>
	192	8.0	8.0	6.00	1	<b>D Module</b>
	600	25.0	23.0	17.25	2	<b>G Module</b>
<b>Dual Output</b>						
<b>12/12V</b> (5.0-15.0)	240	8.0	8.0	6.00	1	<b>E Module</b>
<b>24/24V</b> (18.0-28.0)	280	5.0	5.0	3.75	1	<b>H Module</b>
<b>12V</b> (5.0-15.0)	260	8.0	8.0	6.00	1	<b>P Module</b>
<b>24V</b> (18.0-28.0)	260	5.0	5.0	3.75		



Note: Module total slots must not exceed 5 slots

Upon order placement Lambda will verify the part number configuration and supply a customer specific part number. (i.e. CA400 H12345)



- NOTE:
1. DIMENSIONS ARE IN INCHES EXCEPT DIMENSIONS ( ) ARE IN MM
  2. 4x M4 TAPPED HOLES FOR CUSTOMER MTG SCREWS MUST NOT PROTRUDE INTO POWER SUPPLY BY MORE THAN .25 (6.3).
  3. CUSTOMER MUST PROVIDE CLEARANCE AROUND VENT HOLES TO ALLOW FOR AIR FLOW

